

# ECF, JUNIOR & LOCAL EVENTS SUPPLEMENT

## MCCU CALENDAR

Can I put out another plea for organisers to let me have dates of chess events, whatever they may be, it is in everyone's interest to avoid clashes that can affect all the events involved? I would dearly like to set up a proper Midlands Events calendar for the 2006/7 season, but cannot hope to do so without your help.

You can contact me on 0116 2609012 or [juliedjohnson@yahoo.com](mailto:juliedjohnson@yahoo.com)

---

## INSIDE THIS SUPPLEMENT

- 2 Warwickshire Championships
- 2 Stockport Rapidplay
- 4 Dudley Spectrum Congress
- 5 European Senior Team Championships
- 6 Winton Capital Solving Championships
- 8 Leicester Rapidplay
- 10 Forthcoming Events
- 11 National Club Results
- + MCCU County team results & Union Tables

## *17th Nottingham Chess Rapidplay*

This year's Nottingham Rapidplay was held at Bramcote Hills Sport and Community College, Nottingham, on 12 March. Numbers were up on last year and the competition ran smoothly.

### Results

#### Open

Open to all players

- **1st equal: M. Barnes (Gambit) and A. Byron (Wigston);** £115 each

#### Major

Open to players graded below 140

- **1st: A. Parmar (West Nottingham);** £120
- **2nd: T. Robinson (Redditch);** £70

#### Minor

Open to players graded below 110

- **1st: D. Lin (West Nottingham);** £120
- **2nd equal: P. Blackburn (Rugby), A. Littlewood (Rotherham Juniors), A. Draper (Birmingham Settlement) and D. Broughton (West Bridgford);** £17.50 each

## Warwickshire Championships,

**18-19 February 2006**

### Open

*(Prize Fund £525)*

1st = Matthew Turner (Scunthorpe) 4½/5

Stephen Gordon (B'ham Univ)

3rd Graeme Buckley (Wimbledon) 4/5

*Player on 3½ points*

James Sherwin (Bath) 3½/5

### Under 160

*(Prize Fund £225)*

1st Donny Muter (Richmond Jnr) 4½/5

2nd Ryan Palmer (Newport) 4/5

3rd = Allan Drost (Newcastle-u-L) 3½/5

Jeremy Fallowfield (Stourbridge)

Robin Huq (Battersea)

Paul Kelly (Hastings)

Amisha Parmar (Notts)

*Player on 3 points*

Tony Marsh (West Brom) 3/5

### Under 130

*(Prize Fund £225)*

1st Phillip Blackburn (Rugby) 4½/5

2nd = Craig Whitfield (Cheddleton) 4/5

Steve Chadaway (Handsworth Wood)

Adam Draper (B'ham Settlement)

Tony Boyle (Bromsgrove)

### Under 100

*(Prize Fund £225)*

1st H Stepanyan 5/5

2nd Aled Walker (Shirley & Lucas) 4½/5

3rd = Adam Jones (Coventry) 4/5

Chris Lewis (Newport)

G Perks (South B'ham)

*Player on 3½ points*

Clive Billinge (Kidderminster) 3½/5

*Players on 3 points*

David Buckley (Brewood) 3/5

Gabor Csepregi (Shirley & Lucas)

## Stockport Rapidplay, 5 February 2006

### OPEN ( 22 Competitors )

1 = Daskevics V Coventry 5

Davies N 3C's

3 = Beach R A Stockport 4 ½

Beardsworth A

5 = Haslinger S Formby 3 ½

Horner J Bolton

Hulmes D Stockport

Woodcock S Atherton

9 = Campbell I Aigburgh 3

Hood S Broughton Arms

Owen D Urmston/Chorlton

Surtees M Bolton

U 185 Beach R A Stockport 4 ½

**MAJOR ( 34 Competitors )**

1	Lamb H	Bolton	6
2 =	Flores M	Eccles	4 ½
	Gorman J	Caergwle	
	Legge A	Wallasey	
5 =	Armstrong P	Oldham	4
	Westwood R	Rushall	
7 =	Barnaby N	Bolton	3 ½
	Graham O	Worksop	
	Glover R	3C's	
	Hartley D	Amber Valley	
	Hill S	CREDA	
	McLoughlin N	Northwich	
	Mulleady P	Atherton	
	Newton R	Heywood	
	Wagenbach J	Worksop	
	Wright J	3C's	
17 =	Gavin R	Oldham	3
	Lally M	Phoenix	
	Platts P S	3C's	
	Potter S	Widnes	
U 135	Armstrong P	Oldham	4
	<i>Stockport League Trophy</i>		
	Lobo D	Macclesfield	2
	<b>INTERMEDIATE (49 Competitors )</b>		
1 =	Coward N	Great Lever	5
	Harris S	Rushall	
	Linke K	Altrincham	
4 =	Connor M	Great Lever	4 ½
	Massey P	Skelmersdale	

	Oldham M	Bramhall	
7 =	Colledge D	Courier	4
	Glover R	3C's	
	Lockett K	Altrincham	
	Montgomery S		
	Norden P		
	Warhurst R	Wilmslow	
	Wilcox C	Rushall	
14 =	Clements T	3C's	3 ½
	Neto S		
	Ormerod S	Darlington	
	Taylor D	Rochdale	
	Taylor R	Bramhall	
	Tennant-Smith J	Heywood	
U 106	Massey P	Skelmersdale	4 ½

*Stockport League Trophy*

	Linke K	Macclesfield	5
--	---------	--------------	---

**MINOR (55 Competitors )**

1 =	Doherty M	Chorlton	5 ½
	Lobo J	Macclesfield	
3	Barker M	Ashton	5
4 =	Bibby P		4 ½
	Jowett C		
	Oates I		
	McCarthy P	Rose Forgrove	
8 =	Anderson I	Stockport	4
	Bowler J	Churwell School	
	Carroll A		
	Cohen P	Salford	
	De Santos A	Preston	
	Grant J	M/C University	

	Kelly J	Stockport	
	Waddington J	Bolton	
16 =	Buckley D	Bushbury	3 ½
	Clarke G	East Cheshire	
	Cooper S	Newcastle-U-Lyne	
	Davies D	Blackpool	
	Nixon T	Alsager School	
	Oldham K	Bramhall	
	Prime A	Stockport	
	Towse S	3C's	
U 80 =	Bowler J	Churwell School	4
	Carroll A		
	Cohen P	Salford	
	De Santos A	Preston	
U 60 =	Cooper S	Newcastle-U-Lyne	3 ½
	Nixon T	Alsager School	
U G	Oates I		4 ½
U 18yrs	McCarthy P	Rose Forgrove	4 ½
U 14yrs	Towse S	3C's	3 ½
U 11yrs	Bowler J	Churwell School	4
<i>Stockport League Trophy</i>			
	Lobo J	Macclesfield	5 ½
<i>Veteran (Best in any Section)</i>			
	Open Lamb H	Bolton	6

"I won't play with you anymore. You have insulted my friend."  
**Miguel Najdorf, at blitz, when an opponent cursed himself  
for a blunder.**

## Spectrum Chess - 9th Dudley Congress, 28-29 January 2006

### Challengers Tournament

*Total Prize Money £150-00*

Name	Club/Town	Grade	Score
Jamie Fowler	Somerset	62	80%
Alan R Fraser	Beckenham & Bromley	81	80%
Sue L Farrington	Beckenham & Bromley	89	70%
Kevin J Moore	Walsall Kipping	86	70%
Alan Bloom	Willesden *	90	60%
Adam Parkinson	Northfield Birmingham	-	60%
Paul Todd	Ashfield	85	60%
Paul,Williams	South Birmingham	76	60%

### Minor Tournament

*Total Prize Money £150-00*

Adam Draper	Birmingham Settlements	119	80%
Thomas Burgess	Sutton Coldfield	114	70%
Gary C Jackson	Redditch	111	70%
Fay Birch	Warwick Select	84	60%
Ian P Blencowe	Gloucester	113	60%
Steve Shaw	Greenlands	90	60%
Roger W Walker	Belper	103	60%
Steven G Woolgar	Hanham	107	60%

### Major Tournament

*Total Prize Money £150-00*

Peter Jaszkiwskyj	East Ham	156	80%
Michael S Kobylka	Albany/Hayes	164	80%
John A Broadmore	Sutton Coldfield	-	70%
Andrew Price	Leamington	137	60%
Stephen C Pride	Cambrdige	143	60%

### Open Tournament

Total Prize Money £150-00

Michael J Franklin	Richmond	195	80%
Dominic Allen	Powdermill	144	70%
David A Cutmore	Wood Green	170	60%
Martin J Cutmore	Ashford	176	60%

### European Seniors, 17-24 February 2006

played in Dresden

GB Teams	Final Standings (seed no. in brackets)		
<b>GB-1</b>	22 (17)	8pts	16 games
Littlewood, John		3	
Richardson, Keith		5½	
MacDonald-Ross, Michael (Scotland)		4	
Wheeler, John F		3½	
<b>GB-2</b>	17 (21)	9pts	18½ games
Wade, Robert		3	
Byway, Paul		5	
James, Geoffrey		5½	
Farrand, Julian		5	
<b>GB-3</b>	26 (30)	7pts	16½ games
Cromblehome, Alan		2	
Scholes, James		4	
Edwards, Ray		5	
Singleton, Michael		5½	

<b>GB-4</b>	38 (39)	6pts	13½ games
Feavyour, John		4½	
MacDonald-Ross, Stephen		3	
Rety, John		2	
Wood, Peter		4	
<b>GB-5</b>	44 (42)	4pts	10½ games
Wilson, Peter		2	
Smith, David		2	
Pemberton, Clive		2½	
Flockhart, Hugh (Scotland)		3	
MacGilchrist, Siegrun (Scotland)		1	

#### Other results:

1. (1) Dostoinstvo Moscow 15 pts; 22.5 games
2. (2) Germany 14 pts; 23 games
3. (8) Finland 12 pts; 20 games

#### Board prizes:

1. V.Korchnoi (Switzerland) (7/8)
2. B.Khanukov (Cologne) (6/8)
3. V.Chernikov (Moscow) (5.5/8)
4. K.Klundt (Germany) (7/8)

This is the second time Great Britain 2 have outscored GB

~~~~~  
"The process of rating players can be compared to the measurement of the position of a cork bobbing up and down on the surface of agitated water with a yard stick tied to a rope and which is swaying in the wind."

**Arpad Elo, *Chess Life*, 1962**

## Winton Capital British Chess Solving Championship, 18 February 2006

The Final of the 2005-2006 Winton Capital British Chess Solving Championship took place at Oakham School on 18th February. A very strong Open tournament was held simultaneously, featuring a number of titled overseas solvers. Solving GM Jonathan Mestel retained his title, while the Open was won by World Champion Piotr Murdzia.

The leading placings were:

### British Championship

1st GM Jonathan Mestel 58/65, 2nd IM David Friedgood 51, 3rd FM Colin McNab 49, 4th FM Michael McDowell 42, 5th Ian Watson 38. (23 competitors)

### Open

1st GM Piotr Murdzia (Poland) 64/65, 2nd GM Marjan Kovacevic (Serbia & Montenegro) 59, 3rd GM Boris Tummles (Germany) 54, 4th Paul Valois 43, 5th GM Graham Lee 37. (10 competitors).

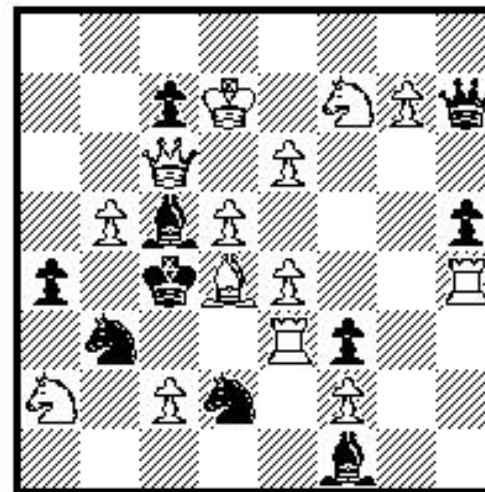
The final table appears on the next page

### Notes:

Solvers in italics (the "Casuals") were invited guests who competed for a separate prize fund. Others (except defending champion Jonathan Mestel) were qualifiers from the postal round and competed for the actual British Championship. Titles are International Solving Titles and ratings are International Solving Ratings. An asterisk by a rating indicates a half-rating.

The second row of the above table lists the problems in the six rounds and the third row gives the maximum points available for each problem and the maximum time allowed for each round in a column headed 'T'. Each row gives the points scored by each competitor for each problem, a total for each round and also the time taken for each round. The placement of competitors is calculated by points scored, with ties being resolved by time taken.

*Here is one of the positions from the event, for those not familiar with solving terms: S=knight & threat are in brackets*



1. **b6!** (1)  
 (2. *Qxa4+* Bb4 3. *Qxb4#*) (1)

1... *Sxe4* 2. **Bf6** (3. *Rc3#*) (1)  
 Bd3 3. *cxd3#*  
 Sd4 3. *Se5#*

1... *Qxe4* 2. **Bb2** (3. *Se5#*) (1)  
 Sd4 3. *Rc3#*

1... *Kxd4* 2. **c3+** Kc4 3. *Se5#* (1)

|    |                      |       |     | RD 1 (#2) |   |   |    | RD 2 (#3) |     |     |      | RD 3 (EG) |     |      |      | RD 4 (H#) |     |     |      | RD 5 (#n) |     |     |      | RD 6 (S#) |     |     |      | Total | Time |     |
|----|----------------------|-------|-----|-----------|---|---|----|-----------|-----|-----|------|-----------|-----|------|------|-----------|-----|-----|------|-----------|-----|-----|------|-----------|-----|-----|------|-------|------|-----|
|    |                      |       |     | 1         | 2 | 3 | T  | 1         | 2   |     | T    | 1         | 2   |      | T    | 1         | 2   |     | T    | 1         | 2   |     | T    | 1         | 2   |     | T    |       |      |     |
|    | Maxima               |       |     | 5         | 5 | 5 | 15 | 20        | 5.0 | 5.0 | 10.0 | 40        | 5.0 | 5.00 | 10.0 | 60        | 5.0 | 5.0 | 10.0 | 25        | 5.0 | 5.0 | 10.0 | 55        | 5.0 | 5.0 | 10.0 | 30    | 65.0 | 230 |
| GM | Murdzia, Piotr       | 2798  | POL | 5         | 5 | 5 | 15 | 19        | 5.0 | 5.0 | 10.0 | 30        | 4.0 | 5.0  | 9.0  | 47        | 5.0 | 5.0 | 10.0 | 11        | 5.0 | 5.0 | 10.0 | 40        | 5.0 | 5.0 | 10.0 | 24    | 64.0 | 171 |
| GM | Kovacevic, Marjan    | 2695  | SCG | 5         | 5 | 5 | 15 | 17        | 5.0 | 5.0 | 10.0 | 30        | 4.5 | 3.5  | 8.0  | 60        | 5.0 | 2.5 | 7.5  | 25        | 4.0 | 5.0 | 9.0  | 42        | 5.0 | 5.0 | 10.0 | 28    | 59.5 | 202 |
| GM | Mestel, Jonathan     | 2708  | GBR | 5         | 5 | 5 | 15 | 13        | 4.0 | 5.0 | 9.0  | 40        | 4.0 | 5.0  | 9.0  | 39        | 5.0 | 2.5 | 7.5  | 25        | 2.5 | 5.0 | 7.5  | 55        | 5.0 | 5.0 | 10.0 | 22    | 58.0 | 194 |
| GM | Tummes, Boris        | 2604  | GER | 5         | 5 | 5 | 15 | 18        | 5.0 | 5.0 | 10.0 | 40        | 4.0 | 0.5  | 4.5  | 60        | 5.0 | 5.0 | 10.0 | 13        | 0.0 | 5.0 | 5.0  | 55        | 5.0 | 5.0 | 10.0 | 15    | 54.5 | 201 |
| IM | Friedgood, David     | 2457  | GBR | 5         | 5 | 5 | 15 | 10        | 3.5 | 3.0 | 6.5  | 40        | 4.0 | 3.5  | 7.5  | 60        | 5.0 | 2.5 | 7.5  | 25        | 0.0 | 5.0 | 5.0  | 55        | 4.5 | 5.0 | 9.5  | 30    | 51.0 | 220 |
| FM | McNab, Colin         | 2424  | GBR | 5         | 5 | 5 | 15 | 18        | 5.0 | 5.0 | 10.0 | 36        | 5.0 | 1.5  | 6.5  | 60        | 5.0 | 2.5 | 7.5  | 16        | 0.0 | 5.0 | 5.0  | 55        | 5.0 | 0.0 | 5.0  | 30    | 49.0 | 215 |
|    | Valois, Paul         | 2176  | GBR | 5         | 5 | 5 | 15 | 20        | 3.5 | 4.0 | 7.5  | 40        | 0.0 | 0.5  | 0.5  | 57        | 5.0 | 0.0 | 5.0  | 25        | 0.0 | 5.0 | 5.0  | 55        | 5.0 | 5.0 | 10.0 | 27    | 43.0 | 224 |
| FM | McDowell, Michael    | 2415  | GBR | 0         | 5 | 5 | 10 | 20        | 4.5 | 4.0 | 8.5  | 40        | 0.5 | 0.5  | 1.0  | 60        | 5.0 | 5.0 | 10.0 | 14        | 3.5 | 4.0 | 7.5  | 55        | 5.0 | 0.0 | 5.0  | 30    | 42.0 | 219 |
|    | Watson, Ian          | 2232  | GBR | 0         | 5 | 0 | 5  | 20        | 5.0 | 5.0 | 10.0 | 40        | 0.0 | 0.5  | 0.5  | 60        | 5.0 | 2.5 | 7.5  | 25        | 5.0 | 5.0 | 10.0 | 55        | 5.0 | 0.0 | 5.0  | 30    | 38.0 | 230 |
| GM | Lee, Graham          | 2470  | GBR | 5         | 5 | 5 | 15 | 17        | 5.0 | 5.0 | 10.0 | 36        | 0.0 | 0.0  | 0.0  | 60        | 5.0 | 0.0 | 5.0  | 25        | 0.0 | 2.0 | 2.0  | 45        | 5.0 | 0.0 | 5.0  | 23    | 37.0 | 206 |
|    | Krolkowski, Ryszard  | 2220  | POL | 0         | 5 | 0 | 5  | 20        | 5.0 | 5.0 | 10.0 | 35        | 2.0 | 0.0  | 2.0  | 60        | 5.0 | 0.0 | 5.0  | 25        | 0.0 | 4.0 | 4.0  | 55        | 5.0 | 1.0 | 6.0  | 30    | 32.0 | 225 |
|    | Gemmell, John        | 2046  | GBR | 0         | 5 | 5 | 10 | 19        | 0.0 | 4.0 | 4.0  | 40        | 0.0 | 0.5  | 0.5  | 60        | 5.0 | 2.5 | 7.5  | 25        | 0.0 | 5.0 | 5.0  | 55        | 5.0 | 0.0 | 5.0  | 30    | 32.0 | 229 |
|    | Bamford, Andrew      | 2048  | GBR | 5         | 5 | 5 | 15 | 20        | 3.0 | 0.0 | 3.0  | 40        | 4.5 | 0.5  | 5.0  | 60        | 0.0 | 0.0 | 0.0  | 25        | 1.0 | 2.0 | 3.0  | 55        | 5.0 | 0.0 | 5.0  | 30    | 31.0 | 230 |
|    | Johnston, Dafydd     | 2040  | GBR | 0         | 5 | 5 | 10 | 20        | 4.0 | 5.0 | 9.0  | 40        | 0.5 | 0.0  | 0.5  | 60        | 5.0 | 0.0 | 5.0  | 25        | 0.0 | 2.0 | 2.0  | 55        | 4.5 | 0.0 | 4.5  | 30    | 31.0 | 230 |
|    | Sutherland, Neil A   | 1842* | GBR | 5         | 5 | 0 | 10 | 20        | 0.0 | 0.0 | 0.0  | 40        | 4.0 | 0.0  | 4.0  | 60        | 5.0 | 0.0 | 5.0  | 25        | 2.5 | 0.0 | 2.5  | 55        | 5.0 | 0.0 | 5.0  | 30    | 26.5 | 230 |
|    | Cumbers, Paul        | 2102  | GBR | 0         | 0 | 0 | 0  | 20        | 4.0 | 0.0 | 4.0  | 40        | 4.0 | 0.5  | 4.5  | 60        | 5.0 | 2.5 | 7.5  | 25        | 0.0 | 4.0 | 4.0  | 55        | 5.0 | 0.0 | 5.0  | 30    | 25.0 | 230 |
|    | Clark, Bill          | 2062  | GBR | 5         | 5 | 0 | 10 | 20        | 0.0 | 5.0 | 5.0  | 40        | 0.0 | 0.0  | 0.0  | 60        | 5.0 | 0.0 | 5.0  | 25        | 0.0 | 0.0 | 0.0  | 55        | 4.5 | 0.0 | 4.5  | 28    | 24.5 | 228 |
|    | Gurr, Lyndon         | 2052  | GBR | 0         | 5 | 5 | 10 | 20        | 3.0 | 3.0 | 6.0  | 40        | 0.5 | 0.5  | 1.0  | 60        | 2.5 | 0.0 | 2.5  | 25        | 0.0 | 3.0 | 3.0  | 55        | 0.0 | 0.0 | 0.0  | 30    | 22.5 | 230 |
|    | Orton, Stephen       | 2073* | GBR | 0         | 5 | 5 | 10 | 20        | 0.0 | 0.0 | 0.0  | 40        | 4.5 | 0.5  | 5.0  | 60        | 5.0 | 0.0 | 5.0  | 25        | 0.0 | 2.0 | 2.0  | 55        | 0.0 | 0.0 | 0.0  | 30    | 22.0 | 230 |
|    | Lawrence, John A     | 1951  | GBR | 0         | 0 | 5 | 5  | 20        | 2.5 | 5.0 | 7.5  | 40        | 4.0 | 2.0  | 6.0  | 60        | 0.0 | 0.0 | 0.0  | 25        | 0.0 | 2.0 | 2.0  | 55        | 0.0 | 0.0 | 0.0  | 30    | 20.5 | 230 |
|    | Blackstock, Les      | 2017* | GBR | 0         | 5 | 0 | 5  | 20        | 0.0 | 3.0 | 3.0  | 40        | 0.0 | 0.5  | 0.5  | 60        | 5.0 | 2.5 | 7.5  | 25        | 0.0 | 1.0 | 1.0  | 55        | 0.0 | 0.0 | 0.0  | 30    | 17.0 | 230 |
|    | Clarke, Peter H      | 2059* | GBR | 0         | 0 | 5 | 5  | 20        | 1.5 | 2.0 | 3.5  | 40        | 0.5 | 0.0  | 0.5  | 60        | 5.0 | 0.0 | 5.0  | 25        | 0.0 | 2.0 | 2.0  | 55        | 0.0 | 0.0 | 0.0  | 30    | 16.0 | 230 |
|    | Emmerson, Stephen    | 1959  | GBR | 0         | 0 | 0 | 0  | 20        | 4.5 | 0.0 | 4.5  | 40        | 1.0 | 0.0  | 1.0  | 60        | 2.5 | 0.0 | 2.5  | 25        | 0.0 | 2.0 | 2.0  | 55        | 4.0 | 1.0 | 5.0  | 30    | 15.0 | 230 |
|    | Clarke, Peter C      | 1829  | GBR | 0         | 5 | 0 | 5  | 20        | 0.0 | 0.0 | 0.0  | 40        | 0.5 | 0.5  | 1.0  | 60        | 0.0 | 0.0 | 0.0  | 25        | 0.0 | 4.0 | 4.0  | 55        | 3.5 | 0.0 | 3.5  | 30    | 13.5 | 230 |
|    | Gluszko, Krzysztof   | 1917  | POL | 0         | 0 | 0 | 0  | 20        | 0.0 | 0.0 | 0.0  | 40        | 2.0 | 0.0  | 2.0  | 60        | 0.0 | 0.0 | 0.0  | 25        | 0.0 | 3.0 | 3.0  | 55        | 5.0 | 3.0 | 8.0  | 30    | 13.0 | 230 |
|    | Penrose, Oliver      | 1899  | GBR | 0         | 5 | 0 | 5  | 20        | 0.0 | 0.0 | 0.0  | 40        | 0.5 | 0.0  | 0.5  | 60        | 0.0 | 0.0 | 0.0  | 25        | 0.0 | 3.0 | 3.0  | 55        | 4.5 | 0.0 | 4.5  | 30    | 13.0 | 230 |
|    | Thwaites, Quentin    | 1702* | GBR | 0         | 0 | 0 | 0  | 20        | 2.5 | 0.0 | 2.5  | 40        | 0.5 | 0.0  | 0.5  | 60        | 5.0 | 0.0 | 5.0  | 25        | 0.0 | 4.0 | 4.0  | 55        | 0.0 | 0.0 | 0.0  | 30    | 12.0 | 230 |
|    | Ogbeide, Gerhardt    | 1628  | GBR | 0         | 0 | 5 | 5  | 20        | 1.0 | 0.0 | 1.0  | 40        | 0.5 | 0.5  | 1.0  | 60        | 0.0 | 0.0 | 0.0  | 25        | 0.0 | 0.0 | 0.0  | 55        | 0.0 | 0.0 | 0.0  | 30    | 7.0  | 230 |
|    | Smith, Graham        | 1878* | GBR | 0         | 0 | 0 | 0  | 20        | 0.0 | 3.0 | 3.0  | 40        | 2.0 | 0.5  | 2.5  | 60        | 0.0 | 0.0 | 0.0  | 25        | 0.0 | 1.0 | 1.0  | 55        | 0.0 | 0.0 | 0.0  | 30    | 6.5  | 230 |
|    | Robinson, Peter      |       | GBR | 0         | 0 | 0 | 0  | 20        | 1.0 | 4.0 | 5.0  | 39        | 1.0 | 0.0  | 1.0  | 60        | 0.0 | 0.0 | 0.0  | 25        | 0.0 | 0.0 | 0.0  | 55        | 0.0 | 0.0 | 0.0  | 30    | 6.0  | 229 |
|    | Gkoutintas, Antonios |       | GBR | 0         | 0 | 0 | 0  | 20        | 1.0 | 0.0 | 1.0  | 40        | 2.0 | 0.0  | 2.0  | 60        | 0.0 | 0.0 | 0.0  | 25        | 0.0 | 3.0 | 3.0  | 55        | 0.0 | 0.0 | 0.0  | 30    | 6.0  | 230 |
|    | Hill, Mike           | 1600* | GBR | 0         | 0 | 0 | 0  | 20        | 0.0 | 0.0 | 0.0  | 40        | 0.0 | 0.0  | 0.0  | 60        | 0.0 | 0.0 | 0.0  | 25        | 0.0 | 2.0 | 2.0  | 55        | 4.0 | 0.0 | 4.0  | 30    | 6.0  | 230 |
|    | Jacob, Syd           |       | GBR | 0         | 0 | 0 | 0  | 20        | 0.0 | 1.0 | 1.0  | 40        | 0.0 | 0.0  | 0.0  | 60        | 0.0 | 0.0 | 0.0  | 25        | 0.0 | 2.0 | 2.0  | 55        | 0.0 | 0.0 | 0.0  | 30    | 3.0  | 230 |

## 4th Leicester Rapidplay, 2 April 2006

### Open

| Rank | Name               | Club           | Rating | Score | Prize |
|------|--------------------|----------------|--------|-------|-------|
| 1    | Khandelwal, Ankush | Nomads (Notts) | 174    | 4.5   | 1st=  |
| 2    | Ledger, Andrew J   | Sheffield      | 217    | 4.5   | 1st=  |
| 3    | Burrows, Martin P  | Wigston        | 176    | 4     | 3rd=  |
| 4    | Edwards, L Alan    | Wigston        | 183    | 4     | 3rd=  |
| 5    | Kobese, Watu       | Braunstone     | 210    | 4     | 3rd=  |
| 6    | Chipanga, Taka     | Braunstone     | 192    | 3.5   |       |
| 7    | Sygnowski, Tomasz  | Wolverhampton  | 183    | 3     |       |
| 8    | Surtees, Mike J    | Bolton         | 188    | 3     |       |
| 9    | Jain, Akash        | Pinner         | 114    | 3     |       |
| 10   | Harris, Michael J  | Diss           | 195    | 3     |       |
| 11   | Briscoe, Chris     | Surbiton       | 165    | 2.5   |       |
| 12   | Pickering, Carl A  | Kenilworth     | 119    | 2.5   |       |
| 13   | Pourmozafari, Ben  | Syston         | 118    | 2     |       |
| 14   | Fisher, Simon      | Nuneaton       | 127    | 0.5   |       |
| 15   | Moor, Ferenc       | Nuneaton       | 195    | 0     |       |
| 16   | Bingham, Jim       | Braunstone     | 144    | 0     |       |
| 17   | Harrison, Peter    | Littlethorpe   | 115    | 0     |       |

### U171

| Rank | Name                        | Club         | Rating | Score | Prize |
|------|-----------------------------|--------------|--------|-------|-------|
| 1    | Dilley, Jason M             | Lincolnshire | 155    | 6     | 1st   |
| 2    | Legge, Andrew               | Wallasey     | 157    | 4     | 2nd=  |
| 3    | Van Der Westhuizen, Charles | Nuneaton     | 140    | 4     | 2nd=  |
| 4    | Cutmore, David A            | Wood Green   | 149    | 3.5   |       |
| 5    | Malik, Kaiser               | Checkmate    | 123    | 3.5   |       |
| 6    | Robinson, John K            | Braunstone   | 167    | 3.5   |       |
| 7    | Salisbury, Michael W        | Braunstone   | 136    | 3.5   |       |
| 8    | Sharpe, Graham J            | Birstall     | 168    | 3     |       |
| 9    | Cutmore, Martin J           | Wood Green   | 134    | 3     |       |
| 10   | Wells, Daniel J             | Newark       | 156    | 2.5   |       |

|    |                     |              |     |     |  |
|----|---------------------|--------------|-----|-----|--|
| 11 | Towers, Nigel S     | Redditch     | 137 | 2.5 |  |
| 12 | Graham, Oliver      | Worksop      | 145 | 2.5 |  |
| 13 | Bingham, Jim        | Braunstone   | 144 | 2.5 |  |
| 14 | Wilcox, Charlotte J | Rushall      | 147 | 2.5 |  |
| 15 | Weidt, Frank        | Littlethorpe | 170 | 2   |  |
| 16 | Pribanich, Branko   | Northampton  | 158 | 2   |  |
| 17 | Young, Nigel P      | ChessMates   | 139 | 2   |  |
| 18 | Greatorex, Roger    | Coventry     | 144 | 0.5 |  |
| 19 | Horspool, Philip J  | Wigston      | 166 | 0   |  |

### U136

| Rank | Name                | Club              | Rating | Score | Prize   |
|------|---------------------|-------------------|--------|-------|---------|
| 1    | Whitaker, Thomas R  | Rotherham Juniors | 124    | 5.5   | 1st     |
| 2    | Hartley, Dean M     | Amber Valley      | 130    | 5     | 2nd=    |
| 3    | Malik, Dani         | Checkmate         | 128    | 5     | 2nd=    |
| 4    | Pritchard, David    | Walsall           | 129    | 4.5   |         |
| 5    | Robinson, Thomas D  | Redditch          | 127    | 4.5   |         |
| 6    | Dhesi, Iqbal S      | Sutton Coldfield  | 125    | 4.5   | U130 GP |
| 7    | Adcock, Jamie       | Reading           | 111    | 4.5   | U115 GP |
| 8    | Eckloff, Colin      | Whoberley         | 113    | 4     |         |
| 9    | Goodfellow, Russell | Tunbridge Wells   | 116    | 4     |         |
| 10   | Clegg, Robert       | Huddersfield      | 125    | 4     |         |
| 11   | Collins, John GC    | West Nottingham   | 133    | 3.5   |         |
| 12   | Johnson, Mike       | Whoberley         | 134    | 3.5   |         |
| 13   | Forman, Karl L      | Coventry          | 135    | 3.5   |         |
| 14   | Collyer, Geoff C    | Spalding          | 132    | 3.5   |         |
| 15   | Staples, Neil       | Banbury           | 129    | 3.5   |         |
| 16   | Birch, Harvey       | Coventry          | 105    | 3.5   |         |
| 17   | Manger, John        | Littlethorpe      | 124    | 3.5   |         |
| 18   | Ruffle, Alan P      | Birmingham        | 127    | 3.5   |         |
| 19   | Harlow, Phil        | Wigston           | 131    | 3     |         |
| 20   | Watkinson, Phil     | Wigston           | 132    | 3     |         |
| 21   | Wilcox, Stephen R   | Rushall           | 131    | 3     |         |
| 22   | Lloyd, Russell      | Leeds             | 0      | 3     |         |



|    |                            |                  |     |     |    |                    |                  |     |     |        |
|----|----------------------------|------------------|-----|-----|----|--------------------|------------------|-----|-----|--------|
| 23 | Collins, RF (Bob)          | Thurnby          | 108 | 3   | 9  | Hewitt, Graham     | Littlethorpe     | 100 | 4   |        |
| 24 | Maddams, David R           | Rushden          | 110 | 3   | 10 | Leaper, Richard D  | Westminster      | 73  | 4   |        |
| 25 | Price, Andrew              | Leamington       | 135 | 2.5 | 11 | Hazell, George     | Littlethorpe     | 99  | 3.5 |        |
| 26 | Desmedt, Richard E         | Wombwell         | 120 | 2.5 | 12 | Dunne, David C     | Fiveways         | 80  | 3.5 |        |
| 27 | Turvey, Steven S           | Warwick Uni      | 127 | 2.5 | 13 | Broomhall, Peter   | Wolverhampton    | 90  | 3.5 |        |
| 28 | Styles, Calvin             | Rushall          | 135 | 2.5 | 14 | Abubakar, Abdi     | Leicestershire   | 0   | 3.5 |        |
| 29 | Gilbert, Kim T             | Shirley & Lucas  | 102 | 2.5 | 15 | Bullivant, Ross E  | Whoberley        | 74  | 3.5 |        |
| 30 | Rayner, John J             | Nuneaton         | 104 | 2.5 | 16 | Baddeley, Peter    | Warboys          | 89  | 3.5 |        |
| 31 | Anandajeyarajah, Thilagini | Richmond Juniors | 110 | 2.5 | 17 | Davis, Richard     | Spinney Hill WMC | 73  | 3.5 |        |
| 32 | Wagenbach, Janos J         | Mansfield        | 131 | 2   | 18 | Malik, Faraz       | Checkmate        | 0   | 3.5 |        |
| 33 | Johnson, Andy              | Littlethorpe     | 101 | 2   | 19 | Pickering, Anthony | Kenilworth       | 66  | 3.5 | U70 GP |
| 34 | Staley, Phil F             | Bushbury         | 130 | 2   | 20 | Birch, James       | Coventry         | 66  | 3   |        |
| 35 | Tipper, Christopher        | Ashby            | 135 | 2   | 21 | Andrews, Ian M     | Kettering        | 90  | 3   |        |
| 36 | Dines, Sheila J            | Croydon          | 123 | 2   | 22 | Housden, Peter T   | Bedford          | 84  | 3   |        |
| 37 | Harrison, Peter            | Littlethorpe     | 115 | 2   | 23 | Pitcher, Thomas    | Wombwell         | 0   | 3   |        |
| 38 | Wood, Philip RC            | Kenilworth       | 106 | 2   | 24 | Higgins, Frederick | Nuneaton         | 70  | 3   |        |
| 39 | Leary, Peter W             | Rushall          | 118 | 2   | 25 | Asbury, John A     | Shirley & Lucas  | 94  | 3   |        |
| 40 | Graves, Chris J            | Littlethorpe     | 119 | 1   | 26 | Masri, Clive       | Reading          | 0   | 2.5 |        |
| 41 | Clay, Terry                | Hinckley         | 66  | 1   | 27 | Culverhouse, Brian | Oxford           | 96  | 2.5 |        |
| 42 | Reynolds, David            | Ashby            | 108 | 1   | 28 | Waddington, Jim    | Bolton           | 0   | 2.5 |        |
| 43 | Poderico, Francesco        | Bicester RHS     | 99  | 0.5 | 29 | Parsons, Stan      | Littlethorpe     | 75  | 2.5 |        |
| 44 | Stepanyan, Henrik          | Sutton Coldfield | 0   | 0.5 | 30 | Dhesi, Harinder    | Checkmate        | 44  | 2.5 |        |
| 45 | Hadfield, Roy              | Leamington       | 105 | 0   | 31 | Jain, Radha        | Pinner           | 39  | 2.5 |        |
| 46 | Preocanin, Stevan          | Braunstone       | 87  | 0   | 32 | Cassell, Peter     | White Knights    | 57  | 2.5 |        |

## U101

| Rank | Name                 | Club                 | Rating | Score | Prize  |
|------|----------------------|----------------------|--------|-------|--------|
| 1    | Evans, Paul          | Littlethorpe         | 97     | 5.5   | 1st    |
| 2    | Bajaria, Kush        | LPSCA                | 56     | 5     | 2nd    |
| 3    | Phillips, Howard W   | Littlethorpe         | 99     | 4.5   | 3rd=   |
| 4    | Jackson, James P     | Red Dragons          | 100    | 4.5   | 3rd=   |
| 5    | Child, Kieran        | King Edwards School  | 0      | 4.5   | 3rd=   |
| 6    | Rosser, Geoffrey C   | Wolverhampton        | 95     | 4.5   | 3rd=   |
| 7    | Birch, Fay           | Coventry             | 85     | 4.5   | U90 GP |
| 8    | Littlewood, Ashley   | Rotherham Juniors    | 81     | 4     |        |
| 9    | Hewitt, Graham       | Littlethorpe         | 100    | 4     |        |
| 10   | Leaper, Richard D    | Westminster          | 73     | 4     |        |
| 11   | Hazell, George       | Littlethorpe         | 99     | 3.5   |        |
| 12   | Dunne, David C       | Fiveways             | 80     | 3.5   |        |
| 13   | Broomhall, Peter     | Wolverhampton        | 90     | 3.5   |        |
| 14   | Abubakar, Abdi       | Leicestershire       | 0      | 3.5   |        |
| 15   | Bullivant, Ross E    | Whoberley            | 74     | 3.5   |        |
| 16   | Baddeley, Peter      | Warboys              | 89     | 3.5   |        |
| 17   | Davis, Richard       | Spinney Hill WMC     | 73     | 3.5   |        |
| 18   | Malik, Faraz         | Checkmate            | 0      | 3.5   |        |
| 19   | Pickering, Anthony   | Kenilworth           | 66     | 3.5   | U70 GP |
| 20   | Birch, James         | Coventry             | 66     | 3     |        |
| 21   | Andrews, Ian M       | Kettering            | 90     | 3     |        |
| 22   | Housden, Peter T     | Bedford              | 84     | 3     |        |
| 23   | Pitcher, Thomas      | Wombwell             | 0      | 3     |        |
| 24   | Higgins, Frederick   | Nuneaton             | 70     | 3     |        |
| 25   | Asbury, John A       | Shirley & Lucas      | 94     | 3     |        |
| 26   | Masri, Clive         | Reading              | 0      | 2.5   |        |
| 27   | Culverhouse, Brian   | Oxford               | 96     | 2.5   |        |
| 28   | Waddington, Jim      | Bolton               | 0      | 2.5   |        |
| 29   | Parsons, Stan        | Littlethorpe         | 75     | 2.5   |        |
| 30   | Dhesi, Harinder      | Checkmate            | 44     | 2.5   |        |
| 31   | Jain, Radha          | Pinner               | 39     | 2.5   |        |
| 32   | Cassell, Peter       | White Knights        | 57     | 2.5   |        |
| 33   | Kokkinidis, George   | Leicester University | 0      | 2.5   |        |
| 34   | Jackson, Ben M       | Red Dragons          | 65     | 2     |        |
| 35   | Beach, Ray           | Littlethorpe         | 70     | 2     |        |
| 36   | Cassell, Martin      | White Knights        | 55     | 2     |        |
| 37   | Pacitto, Joseph A    | Clay Cross           | 0      | 2     |        |
| 38   | Bouchetoux, Francois | Leicester University | 0      | 1.5   |        |
| 39   | Clay, Terry F        | Nuneaton             | 65     | 1.5   |        |
| 40   | Ricketts, Dave       | Littlethorpe         | 61     | 1.5   |        |
| 41   | McAvoy, Willie       | Coventry             | 48     | 1     |        |
| 42   | Beverungen, Armin    | Leicester University | 0      | 1     |        |
| 43   | Harrison, Callum     | Leicestershire       | 0      | 0     |        |
| 44   | O'Neill, Thomas      | Coulsden             | 76     | 0     |        |

## FORTHCOMING EVENTS

13-17 Apr - **CANCELLED** - 3rd Coventry International  
Mark Hogarth (Tel: 020 8390 3116, Fax: 020 8390 4976,  
Email: [mark.hogarth@btinternet.com](mailto:mark.hogarth@btinternet.com))

14-16 Apr - **Bolton Easter Congress**, including Busy Persons Rapidplay, Bolton Excel Centre, Lower Bridgeman Street, Bolton R Middleton, 97 Dovedale Road, Brightmet, Bolton BL2 5HS (Tel: 01204 383634)

17 Apr - **1st Rotherham Rapidplay**, Phoenix Club, Bawtry Road, Brinsworth, Rotherham, South Yorkshire.  
David Bentley, 53 Nottingham Drive, Wingerworth, Chesterfield, Derbyshire S42 6WD (Tel: 01246 221016, Email: [rotherhamchess@yahoo.co.uk](mailto:rotherhamchess@yahoo.co.uk)) *1st prize for each section £500, Juniors £100*

22-23 Apr - **31st Nottingham Congress**, Bramcote Hills Community College, Moor Lane, Nottingham **NG9 3GA**.  
Tony Wright, 48 Woodland Grove, Chilwell, Nottingham NG9 5BQ (Tel: 0115 917 2468, Email: [ajelectric@btconnect.com](mailto:ajelectric@btconnect.com))

23 Apr - **National Club Rapidplay Championship**, Magdalen College School, Cowley Place, Oxford OX4 1DZ.  
David Lettington, 3 Columbine Road, East Malling, West Malling, Kent ME19 6EP (Tel: 01732 870356, Email: [david\\_lettington@hotmail.com](mailto:david_lettington@hotmail.com))

7 May - **1st Shirley & Wythall Rapidplay**, Wythall House, Silver Street, Wythall, Birmingham **B47 6LZ**.  
Gordon Christie, 24 Norton Lane, Wythall, Birmingham B47 6HA (Tel: 01564 826354, Email: [gsgc@shirleychess.co.uk](mailto:gsgc@shirleychess.co.uk)  
or [gordonsg.christie@zoom.co.uk](mailto:gordonsg.christie@zoom.co.uk))

3 Jun - **MCCU Junior Championships**

Cyril Johnson, 105 Central Avenue, Syston LE7 2EG (Tel: 0116 260 9012, Email: [bcfhomechess@yahoo.co.uk](mailto:bcfhomechess@yahoo.co.uk))

10 Jun - **National Girls' Team Championships**, Esher.

Claire Summerscale (Tel: 020 8874 0135, Email: [chessuk@btinternet.com](mailto:chessuk@btinternet.com))

## MCCU U18 COUNTY TEAM EVENT

I am sorry to report that once again only 2 counties actually turned up for the event at Syston St Peter & Paul school in Syston on Feb 4th. As last year Northamptonshire beat Leicestershire.

On behalf of the Junior & Events Directors I would once again ask counties to look at their set up. Can you really not find 12 youngsters within your county and someone reliable to organise them? Okay, so maybe they will not be your strongest team, but is it really just the very best youngsters that deserve the encouragement of playing for their county?

We have had as many as 13 teams in the not too dim & distant past. Are you not coming to the event because of the time it is held in the year? If so what time of year would be better? Please let us have some feedback, unless we get it we cannot hope to run an event that attracts more teams.

Contact Cyril or Julie Johnson on 0116 2609012 or email [cyriljohnson@yahoo.co.uk](mailto:cyriljohnson@yahoo.co.uk) or [juliedjohnson@yahoo.com](mailto:juliedjohnson@yahoo.com)

## NATIONAL CLUB RESULTS

The number of MCCU entries might be poor, but in the Minor our representatives have performed well. 3 teams reached the Quarter-Finals in the Championship & 2 in the Plate and 1 team on each section has reached the semi-finals.

### MINOR

#### Ashfield v West Leeds, Rd 1 11 December 2005

| Board | Ref No. | Grade    | Player       | Result | Player         | Ref No. | Grade   |
|-------|---------|----------|--------------|--------|----------------|---------|---------|
| 1     | 151489B | 132      | Stan Cranmer | 0 - 1  | J Hunt         | 142640A | 143     |
| 2     | 104775K | 124      | Bob Taylor   | 0 - 1  | B Foster       | 128164B | 123     |
| 3     | 113447E | 108      | Malc Jackson | 0 - 1  | C Cartlidge    | 104804B | 99      |
| 4     | 152050H | 85       | Paul Todd    | ½ - ½  | I D Strickland | 119839H | 89      |
|       |         | (112.25) |              | ½ - 3½ |                |         | (113.5) |

#### Barton Upon Humber v Newark B, Rd 1 Rd 1 11 December 2005

| Board | Ref No. | Grade   | Player            | Result | Player      | Ref No. | Grade   |
|-------|---------|---------|-------------------|--------|-------------|---------|---------|
| 1     | 133944J | 121     | Robert Dennington | 0 - 1  | R Blake     | 106866A | 133     |
| 2     | 116272L | 105     | Keith Noons       | 0 - 1  | G Wollerton | 127081D | 132     |
| 3     | -       | 112     | Andy Giles        | 0 - 1  | A Combie    | 191288E | 126     |
| 4     | 165294B | 104     | Mike Robinson     | 0 - 1  | R Myers     | 233342K | 107     |
|       |         | (110.5) |                   | 0 - 4  |             |         | (124.5) |

#### Littlethorpe 2 v Wycombe & Hazelmere, Rd 1 11 December 2005

| Board | Ref No. | Grade    | Player          | Result  | Player          | Ref No. | Grade   |
|-------|---------|----------|-----------------|---------|-----------------|---------|---------|
| 1     | 117059E | 133      | Howard Phillips | ½ - ½   | Colin Walker    | 258020C | 133     |
| 2     | 109037K | 101      | David Crane     | ½ - ½   | Jonathan Melsom | 115422K | 127     |
| 3     | 253936G | 109      | David Ward      | 1 - 0   | Edward Basham   | 230729H | 102     |
| 4     | 243445D | 100      | Graham Hewitt   | ½ - ½   | Samuel Walker   | 255108B | 88      |
|       |         | (110.75) |                 | 2½ - 1½ |                 |         | (112.5) |

#### Alwoodley v Newark A, Rd 1 4 December 2005

| Board | Ref No. | Grade | Player      | Result | Player    | Ref No. | Grade |
|-------|---------|-------|-------------|--------|-----------|---------|-------|
| 1     | 214108F | 136   | C Wright    | 1 - 0  | D Wells   | 23112E  | 156   |
| 2     | 243663C | 134   | R Browne    | 0 - 1  | G Ladds   | 113979E | 144   |
| 3     | 109828H | 122   | M J Dow     | 0 - 1  | I Burrige | 107728E | 125   |
| 4     | 110869E | 98    | J Frankland | 1 - 0  | M Fox     | -       | 75    |
|       |         | (123) |             | 2 - 2  |           |         | (125) |

#### Lancaster v Creda, Rd 1 4 December 2005

| Board | Ref No. | Grade   | Player      | Result | Player     | Ref No. | Grade    |
|-------|---------|---------|-------------|--------|------------|---------|----------|
| 1     | 181578H | 146     | R A Collins | ½ - ½  | S Hill     | 259968F | 134      |
| 2     | 110478A | 143     | A Fawcett   | ½ - ½  | D Fuller   | 262459L | 131      |
| 3     | 166653J | 103     | B Cornish   | 1 - 0  | T Healey   | 112423H | 129      |
| 4     | 119577D | 86      | B Standen   | 1 - 0  | P Woodward | 222689D | 87       |
|       |         | (119.5) |             | 3 - 1  |            |         | (120.25) |

Forest of Dean v Littlethorpe, Rd 1 27 November 2005

| Board | Ref No. | Grade | Player          | Result | Player           | Ref No. | Grade |
|-------|---------|-------|-----------------|--------|------------------|---------|-------|
| 1     | 261973J | 139e  | Barry Whitelaw  | 0 - 1  | Paul Evans       | 246824E | 145   |
| 2     | 161311L | 131   | Stephen Herbert | 1 - 0  | Sean D Hewitt    | 112575J | 128   |
| 3     | 118136B | 111   | Steve Rogers    | 0 - 1  | Peter K Harrison | 112216C | 124   |
| 4     | 161349C | 75    | Malcolm Wootton | 0 - 1  | George Hazell    | 260173E | 99    |
|       |         | (114) |                 | 3 - 1  |                  |         | (124) |

Bushbury v Buckleymold, Rd 1 26 November 2005

| Board | Ref No. | Grade  | Player      | Result | Player    | Ref No. | Grade    |
|-------|---------|--------|-------------|--------|-----------|---------|----------|
| 1     | -       | 135e   | P Baggott   | 0 - 1  | H J Parry | 116748A | 143      |
| 2     | 131946C | 88     | D Molineux  | 0 - 1  | A Barker  | 106179D | 144      |
| 3     | 113908D | 80     | S Jones     | 0 - 1  | Q Dodd    | 109750H | 135      |
| 4     | 107670L | 79     | F T Burgess | ½ - ½  | J Hausan  | 112055E | 69       |
|       |         | (95.5) |             | ½ - 3½ |           |         | (124.25) |

Littlethorpe v Buckley Mold, Rd 2 22 January 2006

| Board | Ref No. | Grade  | Player         | Result  | Player        | Ref No. | Grade |
|-------|---------|--------|----------------|---------|---------------|---------|-------|
| 1     | 109512C | 147    | Paul Deacon    | ½ - ½   | Andrew Barber | 106179D | 144   |
| 2     | 112575J | 128    | Sean Hewitt    | 1 - 0   | Hayden Parry  | 116748A | 143   |
| 3     | 112216C | 124    | Peter Harrison | 0 - 1   | Quentin Dodd  | 109750H | 135   |
| 4     | 260173E | 99     | George Hazell  | 1 - 0   | Don Lax       | 104359G | 75    |
|       |         | (124.) |                | 2½ - 1½ |               |         | (124) |

Newark B v Syston Rd 2

| Board | Ref No. | Grade    | Player   | Result | Player         | Ref No. | Grade   |
|-------|---------|----------|----------|--------|----------------|---------|---------|
| 1     | 106866A | 133      | R Blake  | 1 - 0  | L Turner       | 232919A | 122     |
| 2     | 157049D | 129      | K Aiton  | 0 - 1  | B Pourmozafari | 179904G | 125     |
| 3     | 191288E | 126      | A Combie | 1 - 0  | C Johnson      | 113676J | 118     |
| 4     | 233342K | 107      | R Myers  | 1 - 0  | P Cresswell    | 125447K | 105     |
|       |         | (123.75) |          | 3 - 1  |                |         | (117.5) |

Bushbury v Chipping Campden, Rd 1 Plate11 February 2006

| Board | Ref No. | Grade  | Player        | Result | Player     | Ref No. | Grade    |
|-------|---------|--------|---------------|--------|------------|---------|----------|
| 1     | 119572E | 130    | Phil Staley   | 0 - 1  | R Dobeodee | 125762G | 135      |
| 2     | 143228L | 97     | Bob Brodie    | 0 - 1  | G M Mills  | 115561B | 132      |
| 3     | 113908D | 80     | Simon Jones   | 0 - 1  | P Drury    | 109879C | 125      |
| 4     | 107670L | 79     | Terry Burgess | 0 - 1  | B Barratt  | 139689E | 99       |
|       |         | (96.5) |               | 0 - 4  |            |         | (122.75) |

Creda v Alwoodley, Rd 1 Plate 5 February 2006

| Board | Ref No. | Grade   | Player       | Result | Player      | Ref No. | Grade |
|-------|---------|---------|--------------|--------|-------------|---------|-------|
| 1     | 111512B | 135     | Andrew Grant | 0 - 1  | R W Jones   | 180278B | 152   |
| 2     | 262459L | 131     | Dave Fuller  | 0 - 1  | M J Dow     | 109828H | 122   |
| 3     | 112423H | 129     | Tom Heale    | 1 - 0  | S M Johnson | 113717H | 112   |
| 4     | 253876D | 87      | John Newton  | 0 - 1  | J Frankland | 110869E | 98    |
|       |         | (120.5) |              | 1 - 3  |             |         | (121) |

Alwoodley v Ashfield Q-F Plate

| Board | Ref No. | Grade | Player      | Result | Player       | Ref No. | Grade |
|-------|---------|-------|-------------|--------|--------------|---------|-------|
| 1     | 180278B | 152   | R W Jones   | 0 - 1  | Stan Cranmer | 151489B | 132   |
| 2     | 243663C | 134   | R Browne    | 0 - 1  | Bob Taylor   | 104775K | 124   |
| 3     | 113717H | 112   | S M Johnson | 0 - 1  | Malc Jackson | 113447E | 108   |
| 4     | 110869E | 98    | J Franklin  | 0 - 1  | Cliff Potter | 117318C | 87    |
|       |         | 124   |             | 0 - 4  |              |         | 112   |

Chipping Camden v Wycombe & Hazlemere Q-F Plate

| Board | Ref No. | Grade | Player    | Result | Player     | Ref No. | Grade |
|-------|---------|-------|-----------|--------|------------|---------|-------|
| 1     | 125762G | 135   | R Dobedoe | ½ - ½  | C M Walker | 358020C | 133   |
| 2     | 115561B | 132   | G Mills   | 0 - 1  | J T Melsom | 115422K | 127   |
| 3     | 109879C | 125   | P Drury   | 1 - 0  | E P Basham | 230729H | 102   |
| 4     | 139689E | 99    | B Barratt | 0 - 1  | S Walker   | 255108B | 88    |
|       |         | 122   |           | 1½-2½  |            |         | 112   |

Lancaster v Newark B Q-F Championship

| Board | Ref No. | Grade | Player      | Result | Player   | Ref No. | Grade |
|-------|---------|-------|-------------|--------|----------|---------|-------|
| 1     | 181578H | 146   | R A Collins | 1 - 0  | R Blake  | 106866A | 133   |
| 2     | 110478A | 143   | A Fawcett   | 1 - 0  | K Aiton  | 157049D | 129   |
| 3     | 166653J | 103   | B Cornish   | ½ - ½  | A Combie | 191288E | 126   |
| 4     | 119577D | 86    | B Standen   | ½ - ½  | R Myers  | 233342K | 107   |
|       |         | (119) |             | 3 - 1  |          |         | (123) |

Bishop Stortford v Newark A Q-F Championship

| Board | Ref No. | Grade | Player     | Result | Player     | Ref No. | Grade |
|-------|---------|-------|------------|--------|------------|---------|-------|
| 1     | 234286J | 131   | P Kenning  | 0 - 1  | D Wells    | 23112E  | 156   |
| 2     | 241765A | 128   | M Kelly    | 0 - 1  | G Ladds    | 113979E | 144   |
| 3     | 250082G | 120   | J Spencer  | ½ - ½  | I Burridge | 107728E | 125   |
| 4     | 255003K | 116   | G Thurston | 0 - 1  | M Fox      | -       | 75    |
|       |         | 124   |            | ½ - 3½ |            |         | 112   |

West Leeds v Littlethorpe Q-F Championship

| Board | Ref No.        | Grade   | Player | Result | Player           | Ref No. | Grade |
|-------|----------------|---------|--------|--------|------------------|---------|-------|
| 1     | J Hunt         | 142640A | 143    | 0 - 1  | Paul Evans       | 246824E | 145   |
| 2     | B Foster       | 128164B | 123    | 0 - 1  | Sean D Hewitt    | 112575J | 128   |
| 3     | C Cartlidge    | 104804B | 99     | ½ - ½  | Peter K Harrison | 112216C | 124   |
| 4     | I D Strickland | 119839H | 89     | 0 - 1  | George Hazell    | 260173E | 99    |
|       |                | 124     |        | ½ - 3½ |                  |         | 112   |

**Major****Loughborough v Bedford -**

J R Mitchell ( 165 ) 115634C 0 v S Ledger ( 178 ) 114228J 1  
A Jex ( 139 ) 113642C 0 P Habershon ( 171 ) 111848B 1  
J Glover ( 139 ) 111312E 0 K Mynett ( 166 ) 155163K 1  
O H Hardy ( 137 ) 112094D 0 P Goldsworthy ( 151 ) 255005C 1  
J N Miller ( 137 ) 115535 1 G Valerio ( 127 ) 120791L 0  
Loughborough 1 Bedford 4.

**West Nottingham v Rose Forgrove -**

MN Nguyen a190 0 M Round ( 157 ) 116298F 1  
D Jarvis ( 153 ) 173444B 1 C W Davies ( 144 ) 158301 D 0  
I S Kingston ( 144 ) 257837C 0 A G Williamson ( 141 ) 142973F 1  
D van der Mast a 138 0 G Conroy ( 139 ) 108770 H 1 D  
Lin ( 104 ) 253669K 0 G M Smith ( 134 ) 144837H 1  
West Nottingham 1 Rose Forgrove 4.

**COUNTY MATCH RESULTS**

MATCH - Greater Manchester v. Warwickshire

SECTION - OPEN

DATE - 28 January 2006

VENUE - Chorlton

WHITE on ODD -

| Bd            | BCF Code | Greater Manchester   | Grade | Score      | Score      | BCF Code | Warwickshire   | Grade |
|---------------|----------|----------------------|-------|------------|------------|----------|----------------|-------|
| 1             | 253929K  | Lukas Van der Linden | 205   | 1          | 0          | 113524H  | Russell James  | 200   |
| 2             | 119158F  | Alan Smith           | 202   | 1          | 0          | ****     | Andre Gansanov |       |
| 3             | 194523D  | Stephen Pickles      | 199   | 0          | 1          | 115042L  | D Mason        | 197   |
| 4             | 113508K  | Dale James           | 198   | 1          | 0          | ****     | V Doshkevics   |       |
| 5             | 114769K  | Paul Macklin         | 194   | 0.5        | 0.5        | 113334C  | Tony Hynes     | 185   |
| 6             | 117352C  | Lloyd Powell         | 193   | 1          | 0          | 112921B  | Phil Holt      | 186   |
| 7             | 113216H  | Dave Hulmes          | 192   | 0.5        | 0.5        | 106348A  | A Baruch       | 186   |
| 8             | 106435G  | Richard Beach        | 187   | 0.5        | 0.5        | 155481F  | Nick Thomas    | 189   |
| 9             | 119904D  | Mike Surtees         | 185   | 1          | 0          | 111028H  | I Galloway     | 182   |
| 10            | ****     | Adrien Lambert       | 2036F | 0.5        | 0.5        | 114497C  | A Lloyd        | 172   |
| 11            | 107756K  | Graham Burton        | 176   | 0.5        | 0.5        | 110278D  | K Scott        | 171   |
| 12            | 114004J  | Harry Lamb           | 162   | 0          | 1          | 113372L  | K Ingram       | 170   |
| 13            | 154079J  | Danny Lee            | 161   | 1          | 0          | 138650F  | M Fletcher     | 160   |
| 14            | 171318J  | Mike Tunstall        | 151   | 0.5        | 0.5        | 247300J  | M Addis        | 150   |
| 15            | 104797J  | Adam Tyton           | 148   | 0          | 1          | 221066H  | D Malik        | 141   |
| 16            | 120826D  | Chris Vassiliou      | 148   | 0.5        | 0.5        | 224085D  | K Malik        | 137   |
| <b>TOTALS</b> |          |                      |       | <b>9.5</b> | <b>6.5</b> |          |                |       |

MATCH - Lincolnshire v. Greater Manchester

SECTION - OPEN

DATE - 26 February 2006

VENUE - Chesterfield, Derbyshire

WHITE on ODD - Lincolnshire

| Bd            | BCF Code | Lincolnshire     | Grade | Score      | Score       | BCF Code | Greater Manchester | Grade |
|---------------|----------|------------------|-------|------------|-------------|----------|--------------------|-------|
| 1             | 106801F  | Nigel Birtwistle | 173   | 0.5        | 0.5         | 253929K  | Lukas vanderLinden | 205   |
| 2             | 194215D  | Kevin Shutt      | 159   | 0          | 1           | 119158F  | Alan Smith         | 202   |
| 3             | 116321J  | Ted Nottingham   | 148   | 0.5        | 0.5         | 194523D  | Stephen Pickles    | 199   |
| 4             | 116655E  | Keith Palmer     | 148   | 0          | 1           | 113508K  | Dale James         | 198   |
| 5             | 222114H  | Ian MacDonald    | 148   | 0.5        | 0.5         | 113216H  | Dave Hulmes        | 192   |
| 6             | 111157H  | Denis Georgiou   | 144   | 0          | 1           | 121082J  | Alan Walton        | 189   |
| 7             | 113979E  | Graham Ladds     | 144   | 0.5        | 0.5         | 106435G  | Richard Beach      | 187   |
| 8             | 160353L  | Geoff Collyer    | 136   | 0          | 1           | 119904D  | Mike Surtees       | 185   |
| 9             | 120802A  | Jan vanGemerem   | 131   | 0          | 1           | ****     | Adrien Lambert     | 2036  |
| 10            | 182506K  | Mike Kelly       | 117   | 0.5        | 0.5         | 107756K  | Graham Burton      | 176   |
| 11            | 108593B  | Mike Colebrook   | 114   | 0          | 1           | 114004J  | Harry Lamb         | 162   |
| 12            | 152036C  | Peter Sherlock   | 111   | 0          | 1           | 104797J  | Adam Tyton         | 148   |
| 13            | ****     | Lee Hall         | 110   | 0.5        | 0.5         | 108513L  | Julian Clissold    | 138   |
| 14            | 116272L  | Keith Noons      | 105   | 1          | 0           | 256709L  | Philip Armstrong   | 132   |
| 15            | 127508C  | Richard Kerrigan | 100   | 0          | 1           | ****     | David Connolly     | uq    |
| 16            | 234183K  | Rick Davey       | 95    | 1          | 0           | ****     | Herbert Thomas     | uq    |
| <b>TOTALS</b> |          |                  |       | <b>5.0</b> | <b>11.0</b> |          |                    |       |

MATCH - Lincolnshire v. Shropshire

SECTION - OPEN

DATE - 28 January 2006

VENUE - Spondon, Derby

WHITE on ODD - Lincolnshire

| Bd            | BCF Code | Lincolnshire     | Grade | Score      | Score       | BCF Code | Shropshire       | Grade |
|---------------|----------|------------------|-------|------------|-------------|----------|------------------|-------|
| 1             | 109683H  | Jason Dilley     | 180   | 0.5        | 0.5         | 118369C  | Nick Rutter      | 187   |
| 2             | 158511D  | Joe Kilshaw      | 163   | 0          | 1           | 188544D  | Simon Fowler     | 189   |
| 3             | 244268B  | Kevin McCarthy   | 162   | 0          | 1           | 200052A  | Tom Pym          | 175   |
| 4             | 116321J  | Ted Nottingham   | 148   | 0          | 1           | 110539F  | Nigel Ferrington | 173   |
| 5             | 113979E  | Graham Ladds     | 144   | 0          | 1           | 117515E  | Glyn Pugh        | 166   |
| 6             | 111157H  | Denis Georgiou   | 144   | 0          | 1           | 240985K  | Gavyn Cooper     | 163   |
| 7             | 160353L  | Geoff Collyer    | 136   | 0.5        | 0.5         | 111451H  | Dave Gostelow    | 160   |
| 8             | 106866A  | Ross Blake       | 133   | 0          | 1           | 111494D  | Nick Graham      | 155   |
| 9             | 120802A  | Jan vanGemerem   | 131   | 0          | 1           | 129064C  | Toby Neal        | 140   |
| 10            | 161988D  | Alan Marshall    | 122   | 0.5        | 0.5         | 166164E  | Steve Tarr       | 138   |
| 11            | 182506K  | Mike Kelly       | 117   | 0.5        | 0.5         | 116900C  | Windsor Peck     | 132   |
| 12            | 191586B  | Hannah Dale      | 117   | 1          | 1           | 114450K  | Gerald Link      | 131   |
| 13            | 222117C  | Mark Stephens    | 115   | 1          | 0           | 242385G  | Gareth Edwards   | 129   |
| 14            | 108593B  | Mike Colebrook   | 114   | 1          | 0           | 104197G  | Peter Crean      | 121   |
| 15            | 152036C  | Peter Sherlock   | 111   | 0          | 1           | 143011H  | Gary White       | 117   |
| 16            | 127508C  | Richard Kerrigan | 100   | 0          | 1           | 183222A  | John Liddell     | 109   |
| <b>TOTALS</b> |          |                  |       | <b>4.5</b> | <b>11.5</b> |          |                  |       |

MATCH - Shropshire v. Warwickshire

SECTION - OPEN

DATE - 25 February 2006

VENUE - Shifnal, Shropshire

WHITE on ODD - Shropshire

| Bd            | BCF Code | Shropshire           | Grade | Score      | Score       | BCF Code | Warwickshire         | Grade |
|---------------|----------|----------------------|-------|------------|-------------|----------|----------------------|-------|
| 1             | 108997D  | Cox, John J          | 216   | 1          | 0           | 115042L  | Mason, Don           | 197   |
| 2             | 118369C  | Rutter, Nick J       | 187   | 0          | 1           | 106348A  | Baruch, Andrew       | 186   |
| 3             | 112969H  | Hopkins, Jamie R     | 181   | 0          | 1           | 112921B  | Holt, Phil           | 186   |
| 4             | 110539F  | Ferrington, Nigel M  | 173   | 0          | 1           | 113334C  | Hynes, AM (Tony)     | 185   |
| 5             | 110368E  | Everington, David MH | 173   | 1          | 0           | 115243K  | McCumiskey, Andrew P | 175   |
| 6             | 117515E  | Pugh, Glyn           | 166   | 0          | 1           | 230881C  | Lam, Paul            | 185   |
| 7             | 107574D  | Lloyd, Richard BE    | 162   | 0          | 1           | 114497C  | Lloyd, Alan          | 172   |
| 8             | 111451H  | Gostelow, David W    | 160   | 0.5        | 0.5         | ****     | Doshkevics, V        | uq    |
| 9             | 111494D  | Graham, Nick         | 155   | 1          | 0           | 110278D  | Escott, K            | 171   |
| 10            | 259177H  | Palmer, Ryan         | 155   | 0.5        | 0.5         | 113372L  | Ingram, Keith R      | 170   |
| 11            | 118009F  | Roberts, Colin J     | 154   | 0          | 1           | 230938F  | Gordon, Callum       | 162   |
| 12            | 129064C  | Neal, Toby           | 140   | 0.5        | 0.5         | 161410B  | Gallagher, Ian       | 152   |
| 13            | 108873H  | Copley, James        | 138   | 0.5        | 0.5         | 111405A  | Goodwin, Ed          | 151   |
| 14            | 166164E  | Tarr, Steve          | 138   | 0.5        | 0.5         | 247300J  | Addis, Mark          | 150   |
| 15            | 126868F  | Wilson, Iain R       | 135   | 0.5        | 0.5         | 224106H  | Malik, Dani          | 141   |
| 16            | 242385G  | Edwards, Gareth      | 129   | 0          | 1           | 224085D  | Malik, Kaiser        | 137   |
| <b>TOTALS</b> |          |                      |       | <b>6.0</b> | <b>10.0</b> |          |                      |       |

MATCH - Derbyshire v. Staffordshire

SECTION - MINOR

DATE - 28 January 2006

VENUE - Spondon, Derby

WHITE on ODD -

| Bd            | BCF Code | Derbyshire  | Grade | Score      | Score      | BCF Code | Staffordshire    | Grade |
|---------------|----------|-------------|-------|------------|------------|----------|------------------|-------|
| 1             | 105573C  | M. Alcock   | 176   | 0          | 1          | 104823F  | P. Wallace       | 197   |
| 2             | 210988J  | D. Latham   | 172   | 0.5        | 0.5        | 105731F  | D. W. Anderton   | 193   |
| 3             | 111264J  | S. Gilmore  | 178   | 0.5        | 0.5        | 111759C  | L. Grinself      | 189   |
| 4             | 105582D  | M. Alderson | 167   | 0.5        | 0.5        | 109109J  | A. Combleholme   | 183   |
| 5             | 107033C  | T. Bould    | 169   | 0.5        | 0.5        | 105462E  | G. Aacey         | 178   |
| 6             | 113695B  | M. Johnson  | 160   | 0          | 1          | 245055A  | J. Mangwengwende | 171   |
| 7             | 110757E  | R. Forey    | 161   | 0          | 1          | 108830A  | D. Cooper        | 166   |
| 8             | 111035E  | R. Gamble   | 148   | 1          | 0          | 120687E  | J. Turner        | 166   |
| 9             | 173444B  | D. Jarvis   | 153   | 0.5        | 0.5        | 209464C  | J. Keaveney      | 154   |
| 10            | 127966L  | A. Downham  | 162   | 1          | 0          | 137099G  | S. Pedder        | 148   |
| 11            | 133526B  | S. May      | 148   | 0          | 1          | 260192J  | A. Drost         | 147   |
| 12            | 110431H  | R. Farley   | 151   | 1          | 0          | 139665B  | D. Perks         | 140   |
| 13            | 127483B  | D. Kent     | 149   | 1          | 0          | 117305E  | P. Porter        | 140   |
| 14            | 112778A  | J. Hoddy    | 144   | 0.5        | 0.5        | 119583K  | J. Stanforth     | 140   |
| 15            | 107427B  | D. Brown    | 134   | 1          | 0          | 259968F  | S. Hill          | 134   |
| 16            | 112669G  | M. Hill     | 134   | 1          | 0          |          | Default          |       |
| <b>TOTALS</b> |          |             |       | <b>9.0</b> | <b>7.0</b> |          |                  |       |

MATCH - Worcestershire v. Leicestershire

SECTION - MINOR

DATE - 28 January 2006

VENUE - Worcester

WHITE on ODD -

| Bd            | BCF Code | Worcestershire | Grade | Score      | Score       | BCF Code | Leicestershire  | Grade |
|---------------|----------|----------------|-------|------------|-------------|----------|-----------------|-------|
| 1             | 116033D  | E. Myers       | 175   | 0          | 1           | 107857E  | Alan Byron      | 178   |
| 2             | 107110F  | G. M. Boyce    | 173   | 0.5        | 0.5         | 125697L  | Martin Burrows  | 173   |
| 3             | 127645B  | P. R. Kitson   | 171   | 0          | 1           | 107674H  | Ray Burgess     | 173   |
| 4             | 110076C  | J. Edge        | 168   | 1          | 0           | 246164L  | John Sutherland | 172   |
| 5             | 165392B  | N. Towers      | 164   | 0.5        | 0.5         | 110122F  | Alan Edwards    | 173   |
| 6             | 135818C  | J. Keene       | 159   | 0.5        | 0.5         | 115634C  | John Mitchell   | 165   |
| 7             | 230883G  | S. Mellor      | 149   | 1          | 0           | 118781J  | Graham Sharpe   | 168   |
| 8             | 242226J  | J. Fallowfield | 148   | 0.5        | 0.5         | 113015J  | Phil Horspool   | 166   |
| 9             | 106812L  | M. Bissell     | 148   | 0          | 1           | 118836H  | Sean Sheahan    | 151   |
| 10            | 128865K  | N. Fallowfield | 145   | 0          | 1           | 116304J  | Robert Northage | 151   |
| 11            | 178296E  | I. Howarth     | 135   | 0          | 1           | 213110K  | Dave Farrell    | 157   |
| 12            | 170913G  | J. Wilson      | 132   | 0          | 1           | 106748F  | Jim Bingham     | 144   |
| 13            | 108621C  | R. Collett     | 131   | 1          | 0           | 116818G  | John Pattinson  | 140   |
| 14            | 128994K  | A. Kirkland    | 132   | 0          | 1           | 115535A  | Jim Miller      | 137   |
| 15            | 113026C  | E. Horwill     | 125   | 1          | 0           | 112094D  | Otto Hardy      | 132   |
| 16            | 235503H  | D. Scriven     | 125   | 0          | 1           | 106989F  | Graham Booley   | 132   |
| <b>TOTALS</b> |          |                |       | <b>6.0</b> | <b>10.0</b> |          |                 |       |

## COUNTY MATCH RESULTS

MATCH - Warwickshire v. Leicestershire

SECTION - Under 150

DATE - 11 February 2006

VENUE -Quinton, Birmingham

WHITE on ODD -

| Bd            | BCF Code | Warwickshire       | Grade | Score      | Score      | BCF Code | Leicestershire    | Grade |
|---------------|----------|--------------------|-------|------------|------------|----------|-------------------|-------|
| 1             | 109211L  | Cundy, Mark A      | 145   | 0          | 1          | 106748F  | Bingham, James T  | 144   |
| 2             | 257493H  | Ali, Golam S       | 145   | 0          | 1          | 263007C  | Mejlvang, Jacob   | 146   |
| 3             | 114805K  | Maher, Mike P      | 140   | 0.5        | 0.5        | 116818G  | Pattinson, John   | 140   |
| 4             | 258610B  | Padilla, Pablo     | 141   | 0          | 1          | 113642C  | Jex, Alan         | 139   |
| 5             | 121042H  | Wallman, Robert J  | 140   | 0.5        | 0.5        | 115535A  | Miller, James N   | 137   |
| 6             | 183305E  | Hope, Gary         | 141   | 1          | 0          | 112094D  | Hardy, Otto H     | 137   |
| 7             | 187492F  | Robinson, Thomas D | 139   | 0.5        | 0.5        | 110755A  | Foreman, Brian A  | 142   |
| 8             | 256344H  | Clarke, Neil       | 139   | 0.5        | 0.5        | 104213A  | Dodds, Iain F     | 130   |
| 9             | 184072B  | Wilson, Alexander  | 135   | 0.5        | 0.5        | 120070H  | Tate, Michael J   | 133   |
| 10            | 170973C  | Williams, Simon    | 135   | 0          | 1          | 259144D  | Watkinson, Phil K | 132   |
| 11            | 233507E  | Fahy, John F       | 131   | 0.5        | 0.5        | 112575J  | Hewitt, Sean D    | 128   |
| 12            | 120270E  | Thomas, Keith      | 131   | 1          | 0          | 179904G  | Pourmozafari, Ben | 125   |
| 13            | 104148E  | Burnett, AJ        | 127   | 0.5        | 0.5        | 153473H  | Turvey, Steven S  | 127   |
| 14            | 106714L  | Biddle, Mike A     | 127   | 0.5        | 0.5        | 104886H  | Wylie, Steve      | 123   |
| 15            | 129346B  | Pitt, Chris W      | 124   | 1          | 0          | 112216C  | Harrison, Peter   | 124   |
| 16            | 245050B  | Draper, Adam       | 119   | 0.5        | 0.5        | 113676J  | Johnson, Cyril    | 119   |
| <b>TOTALS</b> |          |                    |       | <b>7.5</b> | <b>8.5</b> |          |                   |       |

MATCH - Staffordshire v. Nottinghamshire

SECTION - Under 150

DATE - 18 Match 2006

VENUE - Stafford

WHITE on ODD -

| Bd            | BCF Code | Staffordshire     | Grade | Score      | Score      | BCF Code | Nottinghamshire | Grade |
|---------------|----------|-------------------|-------|------------|------------|----------|-----------------|-------|
| 1             | 137099g  | Stephane Pedder   | 148   | 0.5        | 0.5        | 114054b  | Tim Lane        | 148   |
| 2             | 112178k  | Martyn Harris     | 145   | 0.5        | 0.5        | 112398B  | Brian Hayward   | 148   |
| 3             | 179084k  | Derek Laight      | 144   | 0.5        | 0.5        | 113252a  | Steve Hunter    | 140   |
| 4             | 117305e  | Philip Porter     | 140   | 1          | 0          | 121070b  | Keith Walters   | 140   |
| 5             | 114197b  | Andrew Leadbetter | 137   | 0          | 1          | 222174F  | Kevin Harvey    | 138   |
| 6             | 187505l  | Frank Wood        | 137   | 0.5        | 0.5        | 120066f  | John Tassi      | 137   |
| 7             | 259968F  | Steve Hill        | 134   | 0          | 1          | 127129F  | Tony Wright     | 134   |
| 8             | 259555c  | Manoy Arora       | 133   | 0          | 1          | 111493b  | Neil Graham     | 136   |
| 9             | 129433H  | Diarmid Gibson    | 134   | 0.5        | 0.5        | 117696b  | Bill Ray        | 135   |
| 10            | 171034f  | Alex Pready       | 131   | 0.5        | 0.5        | 151489b  | Stan Cranmer    | 132   |
| 11            | ****     | Michael Roberts   | 130e  | 1          | 0          | 115976J  | George Murfet   | 131   |
| 12            | 172279h  | Robert Fell       | 126   | 0          | 1          | 119873h  | Drag Sudar      | 131   |
| 13            | 111503a  | Roger Grainger    | 125   | 0          | 1          | 115766F  | Phil Morgan     | 128   |
| 14            | 263578B  | Steve Harris      | 125e  | 1          | 0          | 118199D  | Keith Roper     | 125   |
| 15            | 109480e  | John Day          | 118   | 0.5        | 0.5        | 139623h  | Austen Carlton  | 121   |
| 16            | 109299g  | Bob Daniels       | 122   | 0          | 1          | 104775k  | Bob Taylor      | 124   |
| <b>TOTALS</b> |          |                   |       | <b>6.5</b> | <b>9.5</b> |          |                 |       |

MATCH - Greater Manchester v. Staffordshire

SECTION - Under 150

DATE - 11 February 2006

VENUE - Chorlton, Manchester

WHITE on ODD - Staffordshire

| Bd            | BCF Code | Greater Manchester | Grade | Score      | Score      | BCF Code | Staffordshire     | Grade |
|---------------|----------|--------------------|-------|------------|------------|----------|-------------------|-------|
| 1             | 104797J  | Adam TYTON         | 148   | 1          | 0          | 137099G  | Stephane PEDDER   | 148   |
| 2             | 116293H  | Mick NORRIS        | 146   | 1          | 0          | 151583E  | Chris SIMPSON     | 145   |
| 3             | 181426G  | Martin BURNS       | 143   | 1          | 0          | 112178K  | Martyn HARRIS     | 145   |
| 4             | 244467H  | Marcial FLORES     | 141   | 0.5        | 0.5        | 179084F  | Derek LAIGHT      | 144   |
| 5             | 143105F  | Jon LONSDALE       | 137   | 0.5        | 0.5        | 117305E  | Philip PORTER     | 140   |
| 6             | 256352G  | Gahassan GEHANI    | 138   | 1          | 0          | 139665B  | Derek PERKS       | 140   |
| 7             | DEFAULT  |                    | N/A   | 0          | 1          | 114197B  | Andrew LEADBETTER | 137   |
| 8             | 171313K  | Alan EDWARDS       | 136   | 0          | 1          | 259968F  | Steve HILL        | 134   |
| 9             | 142857D  | Jim NICOLSON       | 134   | 0.5        | 0.5        | 129433H  | Diarmid GIBSON    | 134   |
| 10            | DEFAULT  |                    | N/A   | 0          | 1          | 259555C  | Manoj ARORA       | 133   |
| 11            | 157151F  | David PARDOE       | 130   | 1          | 0          | 121625K  | Steve WILCOX      | 131   |
| 12            | 106777B  | Graham BIRD        | 120   | 0          | 1          | 172279H  | Robert FELL       | 126   |
| 13            | 127547B  | David KIERNAN      | 121   | 1          | 0          | 111503A  | Roger GRAINGER    | 125   |
| 14            | 186610C  | Peter BUSE         | 121   | 0          | 1          | 263578B  | Steve HARRIS      | 115   |
| 15            | 104765G  | Ray SUMNER         | 116   | 0          | 1          | 152089B  | Peter LEARY       | 118   |
| 16            | 152863E  | Chris MURFIN       | 109   | 0.5        | 0.5        | 109480E  | John DAY          | 118   |
| <b>TOTALS</b> |          |                    |       | <b>8.0</b> | <b>8.0</b> |          |                   |       |

MATCH - Greater Manchester v. Leicestershire

SECTION - Under 150

DATE - 18 March 2006

VENUE - Uttoxeter, Staffs

WHITE on ODD -

| Bd            | BCF Code | Greater Manchester | Grade | Score      | Score      | BCF Code | Leicestershire    | Grade |
|---------------|----------|--------------------|-------|------------|------------|----------|-------------------|-------|
| 1             | 104797J  | Adam Tyton         | 148   | 0.5        | 0.5        | 246824E  | Evans, Paul       | 145   |
| 2             | 116293H  | Mick Norris        | 146   | 1          | 0          | 106748F  | Bingham, James T  | 144   |
| 3             | 244467H  | Marcial Flores     | 141   | 1          | 0          | 263007C  | Mejlvang, Jakob   | 146   |
| 4             | 240721J  | Mark Hesford       | 139   | 0          | 1          | 116818G  | Pattinson, John   | 140   |
| 5             | 143105F  | Jon Lonsdale       | 137   | 0.5        | 0.5        | 113642C  | Jex, Alan         | 139   |
| 6             | 171313K  | Alan Edwards       | 136   | 0.5        | 0.5        | 115535A  | Miller, James N   | 137   |
| 7             | 142857D  | Jim Nicolson       | 134   | 0.5        | 0.5        | 108975E  | Cowley, Michael H | 136   |
| 8             | 256709L  | Phil Armstrong     | 132   | 1          | 0          | 112094D  | Hardy, Otto H     | 137   |
| 9             | 157151F  | David Pardoe       | 130   | 0          | 1          | 261373G  | Connor, Matthew J | 136   |
| 10            | 108722J  | Mick Connor        | 129   | 1          | 0          | 110755A  | Foreman, Brian A  | 142   |
| 11            | DEFAULT  |                    |       | 0          | 1          | 104213A  | Dodds, Iain F     | 130   |
| 12            | 117223C  | Phil Platts        | UG    | 1          | 0          | 120070H  | Tate, Michael J   | 133   |
| 13            | 104765G  | Ray Sumner         | 116   | 1          | 0          | 259144D  | Watkinson, Phil K | 132   |
| 14            | ****     | Kim Andrews        | UG    | 0          | 1          | 112575J  | Hewitt, Sean D    | 128   |
| 15            | 108711D  | Mick Connolly      | 114   | 0          | 1          | 232919A  | Turner, Lewis     | 124   |
| 16            | 152863E  | Chris Murfin       | 109   | 0          | 1          | 112216C  | Harrison, Peter   | 124   |
| <b>TOTALS</b> |          |                    |       | <b>8.0</b> | <b>8.0</b> |          |                   |       |

MATCH - Nottinghamshire A v. Staffordshire

SECTION - Under 125 - Semi-Final

DATE - 28 January 2006

VENUE - Spondon, Derby

WHITE on ODD -

| Bd            | BCF Code | Nottinghamshire A | Grade | Score      | Score      | BCF Code | Staffordshire         | Grade |
|---------------|----------|-------------------|-------|------------|------------|----------|-----------------------|-------|
| 1             | 116053K  | M Nailand         | 121   | 1          | 0          | 109480E  | John DAY              | 118   |
| 2             | 139623H  | A Carlton         | 121   | 0.5        | 0.5        | 263578B  | Stephen HARRIS        | 115   |
| 3             | 192325A  | P Burley          | 115   | 1          | 0          | 110855E  | Ken FRANCIS           | 116   |
| 4             | 126830C  | R Willoughby      | 111   | 1          | 0          | 109299G  | Robert DANIELS        | 122   |
| 5             | 139649D  | M Harper          | 107   | 0          | 1          | 152089B  | Peter LEARY           | 118   |
| 6             | 208356F  | L Bowen           | 106   | 0          | 1          | 109295K  | David W DANIELS       | 115   |
| 7             | 231111C  | T Thurgood        | 105   | 0.5        | 0.5        | 161058C  | Max WOOTTON           | 113   |
| 8             | 143502E  | D Cronshaw        | 105   | 1          | 0          | 166595K  | Geoff ROSSER          | 113   |
| 9             | 253669K  | D Lin             | 104   | 1          | 0          | 139811J  | R WILKINSON (Default) | 113   |
| 10            | 234483L  | I Fillingham      | 103   | 0          | 1          | 262470K  | Andrew STOTT          | 110   |
| 11            | 165517G  | D Dunne           | 99    | 0.5        | 0.5        | 109734K  | Alan DOBSON           | 104   |
| 12            | 245830F  | O Exton           | 98    | 1          | 0          | 107382F  | Peter BROOMHALL       | 104   |
| 13            | 157068H  | L Darby           | 97    | 0.5        | 0.5        | 179091C  | John MONTAGUE         | 102   |
| 14            | 249799C  | T Pynnegar        | 96    | 0          | 1          | 230986F  | Kelvin JONES          | 100   |
| 15            | 246342J  | E Williamson      | 96    | 1          | 0          | 165140H  | Shane COOKSEY         | 100   |
| 16            | 166604G  | P Smith           | 87    | 0          | 1          | 118825C  | Peter SHAW            | 98    |
| <b>TOTALS</b> |          |                   |       | <b>9.0</b> | <b>7.0</b> |          |                       |       |

MATCH - Leicestershire v. Warwickshire

SECTION - Under 125 - Semi-Final

DATE - 28 January 2006

VENUE - Syston, Leics

WHITE on ODD -

| Bd            | BCF Code | Leicestershire        | Grade | Score      | Score       | BCF Code | Warwickshire   | Grade |
|---------------|----------|-----------------------|-------|------------|-------------|----------|----------------|-------|
| 1             | 104886H  | Steve Wylie           | 123   | 0.5        | 0.5         | 129346B  | Chris Pitt     | 124   |
| 2             | 253935E  | Lewis Turner          | 124   | 1          | 0           | 230857F  | Phil Bull      | 123   |
| 3             | 112216C  | Peter Harrison        | 124   | 1          | 0           | 120034d  | Mark Tallis    | 121   |
| 4             | 250159E  | John Manger           | 124   | 1          | 0           | 120981E  | Mike walker    | 121   |
| 5             | 142060E  | Terence Lee           | 122   | 0.5        | 0.5         | 113645J  | Frank Jimenez  | 119   |
| 6             | 113676J  | Cyril Johnson         | 119   | 0          | 1           | 173454E  | Darren Lee     | 117   |
| 7             | 153453B  | Stephen Smith         | 117   | 0          | 1           | 105876K  | John Asbury    | 115   |
| 8             | 256119A  | Chris Parr            | 114   | 0          | 1           | 129117J  | Louis Rawson   | 115   |
| 9             | 253936G  | David Ward            | 109   | 0          | 1           | 221130A  | Colin Eckloff  | 115   |
| 10            | 259694F  | Tom Pinckard          | 107   | 0          | 1           | 231076E  | John Murray    | 110   |
| 11            | 125447K  | Peter Cresswell       | 105   | 0.5        | 0.5         | 114495K  | John Llewelyn  | 109   |
| 12            | 243445D  | Graham Hewitt         | 100   | 0.5        | 0.5         | 113012C  | Dennis Horsley | 107   |
| 13            | 162056D  | Robert Stone          | 103   | 0          | 1           | 129958L  | Ken Warren     | 106   |
| 14            | 256116F  | Andy Johnson          | 101   | 0.5        | 0.5         | 256376K  | Peter Thompson | 105   |
| 15            | 260174G  | Stewart Hollingsworth | 77    | 0          | 1           | ****     | Dennis Seale   | U/G   |
| 16            | 119342K  | Richard Smith         | 98    | 0.5        | 0.5         | 111228E  | Kim Gilbert    | 94    |
| <b>TOTALS</b> |          |                       |       | <b>6.0</b> | <b>10.0</b> |          |                |       |

## COUNTY MATCH RESULTS

MATCH - Nottinghamshire A v. Warwickshire

SECTION - Under 125 - FINAL

DATE - 25 February 2006

VENUE - Barkby Village Hall, Leics

WHITE on ODD - Nottinghamshire

| Bd            | BCF Code | Nottinghamshire  | Grade | Score      | Score       | BCF Code | Warwickshire | Grade |
|---------------|----------|------------------|-------|------------|-------------|----------|--------------|-------|
| 1             | 139623H  | A. Carlton       | 121   | 0          | 1           | 129346B  | C. Pitt      | 124   |
| 2             | 116053K  | M. Nailard       | 121   | 0          | 1           | 230857F  | P. Bull      | 123   |
| 3             | 160301C  | D. Ince          | 119   | 0.5        | 0.5         | 120981E  | M. Walker    | 121   |
| 4             | 192325A  | P. Burley        | 115   | 0          | 1           | 245050B  | A. Draper    | 119   |
| 5             | 126830C  | R. Willoughby    | 111   | 1          | 0           | 105876K  | J. Asbury    | 117   |
| 6             | 139649D  | M. Harper        | 107   | 0          | 1           | 173454E  | D. Lee       | 117   |
| 7             | 240411E  | L. Messam-Sparks | 107   | 0          | 1           | 129117J  | L. Rawson    | 115   |
| 8             | 152238D  | D. Griffiths     | 106   | 0.5        | 0.5         | 231076E  | J. Murray    | 110   |
| 9             | 208356F  | L. Bowen         | 105   | 0          | 1           | ****     | D. Seale     | ug    |
| 10            | 253669K  | D. Lin           | 104   | 0.5        | 0.5         | 114495K  | J. Llewelyn  | 109   |
| 11            | 234483L  | I. Fillingham    | 103   | 0          | 1           | 129958L  | K. Warren    | 106   |
| 12            | 246342J  | E. Williamson    | 96    | 1          | 0           | 183693G  | R. Anderton  | 103   |
| 13            | 222214A  | J. Day           | 95    | 1          | 0           | 240704J  | C. Lee       | 97    |
| 14            | 115804B  | L. Morrell       | 89    | 0.5        | 0.5         | 252878C  | A. Jones     | 98    |
| 15            | 166604G  | P. Smith         | 87    | 0          | 1           | 111228E  | K. Gilbert   | 94    |
| 16            | 130241D  | J. Buttery       | 84    | 1          | 0           | 115214C  | D. McCarthy  | 87    |
| <b>TOTALS</b> |          |                  |       | <b>6.0</b> | <b>10.0</b> |          |              |       |

MATCH - Shropshire v. Warwickshire

SECTION - Under 100 - SEMI-FINAL

DATE - 4 February 2006

VENUE - Shifnal, Shropshire

WHITE on ODD -

| Bd            | BCF Code | Shropshire  | Grade | Score      | Score      | BCF Code | Warwickshire  | Grade |
|---------------|----------|-------------|-------|------------|------------|----------|---------------|-------|
| 1             | 107507L  | R. Brown    | 94    | 0.5        | 0.5        | 256357F  | A. Hussain    | 97    |
| 2             | 256377A  | A. Tunks    | 99    | 1          | 0          | 221511B  | B. Trevis     | 95    |
| 3             | 240253B  | C. Lewis    | 97    | 0          | 1          | 111228E  | K. Gilbert    | 94    |
| 4             | 143781B  | D. Ogundipe | 99    | 1          | 0          | 126940K  | K. Wise       | 87    |
| 5             | 213509H  | K. Grice    | 95    | 0.5        | 0.5        | 152732A  | P. Woodward   | 87    |
| 6             | 136893L  | I. Davies   | 92    | 1          | 0          | 221348F  | J. Burke      | 86    |
| 7             | 117343B  | D. Powell   | 92    | 1          | 0          | 116631B  | J. Pakenham   | 82    |
| 8             | 178003H  | G. Hampson  | 85    | 1          | 0          | 256346A  | D. Cooper     | 75    |
| 9             | 179299E  | A. Pickles  | 86    | 0.5        | 0.5        | 249822E  | P. Hodgkinson | 74    |
| 10            | 143009K  | S. Davies   | 82    | 0          | 1          | 152146K  | B. Garner     | 69    |
| 11            | 240243K  | I. Fenton   | 82    | 1          | 0          | 263574E  | S. Bowen      | ug    |
| 12            | 240245C  | H. Graham   | 46    | 0          | 1          | 263575G  | A. Parkinson  | ug    |
| 13            |          |             |       |            |            |          |               |       |
| 14            |          |             |       |            |            |          |               |       |
| 15            |          |             |       |            |            |          |               |       |
| 16            |          |             |       |            |            |          |               |       |
| <b>TOTALS</b> |          |             |       | <b>7.5</b> | <b>4.5</b> |          |               |       |

MATCH - Worcestershire v. Nottinghamshire

SECTION - Under 100 - Semi-Final

DATE - 11 February 2006

VENUE - Hall Green, Birmingham

WHITE on ODD - Nottinghamshire

| Bd            | BCF Code | Worcestershire  | Grade | Score      | Score      | BCF Code | Nottinghamshire | Grade |
|---------------|----------|-----------------|-------|------------|------------|----------|-----------------|-------|
| 1             | 185413G  | John LOYNES     | 93    | 0          | 1          | 222214A  | Jonathan DAY    | 99    |
| 2             | 248739B  | Ian ELLIS       | 98    | 0          | 1          | 136734B  | Graham GIBSON   | 99    |
| 3             | 183529E  | Terry POUNTNEY  | 96    | 1          | 0          | 165517G  | David DUNNE     | 99    |
| 4             | 108370D  | Michelle CLACK  | 95    | 0          | 1          | 245830F  | Oliver EXTON    | 98    |
| 5             | 108407A  | Maureen CLARK   | 94    | 0.5        | 0.5        | 157068H  | Len DARBY       | 97    |
| 6             | 109677B  | Derek DIGGER    | 98    | 0          | 1          | 246342J  | Eric WILLIAMSON | 96    |
| 7             | 110726E  | Bert FOORD      | 95    | 0          | 1          | 249799C  | Ted PYNEGAR     | 96    |
| 8             | 228368C  | Penny WOOD      | 94    | 0          | 1          | 115804B  | Len MORRELL     | 89    |
| 9             | 117518L  | William PUGH    | 85    | 1          | 0          | 233341H  | Matthew MOORE   | 88    |
| 10            | 129881B  | Fred FRESHWATER | 90    | 0.5        | 0.5        | 166604G  | Peter G SMITH   | 87    |
| 11            | ****     | Ashley DAVIS    | U/G   | 0          | 1          | 261176E  | Hamzah ALI      | 75    |
| 12            | 255598A  | Martin BORELEY  | 84    | 1          | 0          | 259679K  | Ashton ALFRED   | 37    |
| 13            |          |                 |       |            |            |          |                 |       |
| 14            |          |                 |       |            |            |          |                 |       |
| 15            |          |                 |       |            |            |          |                 |       |
| 16            |          |                 |       |            |            |          |                 |       |
| <b>TOTALS</b> |          |                 |       | <b>4.0</b> | <b>8.0</b> |          |                 |       |

MATCH - Shropshire v. Nottinghamshire

SECTION - Under 100 FINAL

DATE - 18 March 2006

VENUE - Stafford

WHITE on ODD -

| Bd            | BCF Code | Shropshire | Grade | Score      | Score      | BCF Code | Nottinghamshire | Grade |
|---------------|----------|------------|-------|------------|------------|----------|-----------------|-------|
| 1             | 107507L  | R BROWN    | 94    | 1          | 0          | 222214A  | Jonathan DAY    | 99    |
| 2             | 240253B  | C LEWIS    | 97    | 1          | 0          | 136734B  | Graham GIBSON   | 99    |
| 3             | 143781B  | D OGUHSIDE | 99    | 0          | 1          | 165517G  | David DUNNE     | 99    |
| 4             | 213509H  | K GRICE    | 95    | 0.5        | 0.5        | 245830F  | Oliver EXTON    | 98    |
| 5             | 136893L  | Ian DAVIES | 92    | 0.5        | 0.5        | 157068H  | Len DARBY       | 97    |
| 6             | 117343B  | D POWELL   | 92    | 0          | 1          | 249799C  | Ted PYNEGAR     | 96    |
| 7             | 178003H  | G HAMPSON  | 85    | 0.5        | 0.5        | 115804B  | Len MORRELL     | 89    |
| 8             | 179299E  | A PICKLES  | 86    | 0.5        | 0.5        | 166604G  | Peter G SMITH   | 87    |
| 9             | 143009K  | S DAVIES   | 82    | 1          | 0          | 152050H  | Paul TODD       | 85    |
| 10            | 248954F  | A TAYLOR   | 83    | 1          | 0          | 130241D  | John BUTTERY    | 84    |
| 11            | 240243K  | I FENTON   | 82    | 1          | 0          | 261176E  | Hamzah ALI      | 75    |
| 12            | 240245C  | H GRAHAM   | 46    | 0          | 1          | 112441K  | Ken HEATH       | 64    |
| 13            |          |            |       |            |            |          |                 |       |
| 14            |          |            |       |            |            |          |                 |       |
| 15            |          |            |       |            |            |          |                 |       |
| 16            |          |            |       |            |            |          |                 |       |
| <b>TOTALS</b> |          |            |       | <b>7.0</b> | <b>5.0</b> |          |                 |       |



OPEN & MINOR CHAMPIONSHIP TABLES 2005-2006

| OPEN         | GTRMAN    | LINCS      | SHROPS     | WARKS     | Pts | Pos |
|--------------|-----------|------------|------------|-----------|-----|-----|
| G MANCHESTER |           | 11 - 5     | Default    | 9.5 - 6.5 | 4   | 3   |
| LINCOLNSHIRE | 5 - 11    |            | 4.5 - 11.5 | 4 - 12    | 0   | 4   |
| SHROPSHIRE   | Walk Over | 11.5 - 4.5 |            | 6 - 10    | 4   | 1st |
| WARWICKSHIRE | 6.5 - 9.5 | 12 - 4     | 10 - 6     |           | 4   | 2nd |

| MINOR          | DERBY      | LEICS      | STAFFS     | WORCS      | Pts | Pos |
|----------------|------------|------------|------------|------------|-----|-----|
| DERBYSHIRE     |            | 4.5 - 11.5 | 9 - 7      | 8.5 - 7.5  | 4   | 2nd |
| LEICESTERSHIRE | 11.5 - 4.5 |            | 10 - 6     | 10 - 6     | 6   | 1st |
| STAFFORDSHIRE  | 7 - 9      | 6 - 10     |            | 11.5 - 4.5 | 2   | 3   |
| WORCESTERSHIRE | 7.5 - 8.5  | 6 - 10     | 4.5 - 11.5 |            | 0   | 4   |

UNDER 150 CHAMPIONSHIP TABLE 2005-2006

|                    | GMAN  | LEICS      | NOTTS      | STAFFS    | WARKS     | PTS | POS |
|--------------------|-------|------------|------------|-----------|-----------|-----|-----|
| GREATER MANCHESTER |       | 8 - 8      | 8 - 8      | 8 - 8     | 8 - 8     | 4   | 4   |
| LEICESTERSHIRE     | 8 - 8 |            | 4.5 - 11.5 | 9.5 - 6.5 | 8.5 - 7.5 | 5   | 3rd |
| NOTTINGHAMSHIRE    | 8 - 8 | 11.5 - 4.5 |            | 9.5 - 6.5 | 6.5 - 9.5 | 5   | 1st |
| STAFFORDSHIRE      | 8 - 8 | 6.5 - 9.5  | 6.5 - 9.5  |           | 7.5 - 8.5 | 1   | 5   |
| WARWICKSHIRE       | 8 - 8 | 7.5 - 8.5  | 9.5 - 6.5  | 8.5 - 7.5 |           | 5   | 2nd |

UNDER 125 CHAMPIONSHIP TABLES 2005-2006

| WEST ZONE      | SHROPS     | STAFFS     | WARKS      | WORCS      | Pts | Pos |
|----------------|------------|------------|------------|------------|-----|-----|
| SHROPSHIRE     |            | 6.5 - 9.5  | 8 - 8      | 11.5 - 4.5 | 3   | 3   |
| STAFFORDSHIRE  | 9.5 - 6.5  |            | 7 - 9      | 10.5 - 5.5 | 4   | 2nd |
| WARWICKSHIRE   | 8 - 8      | 9 - 7      |            | 11.5 - 4.5 | 5   | 1st |
| WORCESTERSHIRE | 4.5 - 11.5 | 5.5 - 10.5 | 4.5 - 11.5 |            | 0   | 4   |

| EAST ZONE        | DERBY     | LEICS     | NOTTS A   | NOTTS B   | Pts | Pos |
|------------------|-----------|-----------|-----------|-----------|-----|-----|
| DERBYSHIRE       |           | 5 - 11    | 5 - 11    | 7.5 - 8.5 | 0   | 4   |
| LEICESTERSHIRE   | 11 - 5    |           | 7.5 - 8.5 | 10 - 6    | 4   | 2nd |
| NOTTINGHAMSHIREA | 11 - 5    | 8.5 - 7.5 |           | 7.5 - 7.5 | 5   | 1st |
| NOTTINGHAMSHIREB | 8.5 - 7.5 | 6 - 10    | 7.5 - 7.5 |           | 3   | 3   |

UNDER 100 CHAMPIONSHIP TABLES 2005-2006

| WEST ZONE      | SHROPS    | STAFFS A  | STAFFS B  | WORCS     | Pts | Pos |
|----------------|-----------|-----------|-----------|-----------|-----|-----|
| SHROPSHIRE     |           | 8 - 4     | 7 - 5     | 5.5 - 6.5 | 4   | 2nd |
| STAFFORDSHIREA | 4 - 8     |           | 7.5 - 4.5 | 5.5 - 6.5 | 2   | 3   |
| STAFFORDSHIREB | 5 - 7     | 4.5 - 7.5 |           | 6 - 6     | 1   | 4   |
| WORCESTERSHIRE | 6.5 - 5.5 | 6.5 - 5.5 | 6 - 6     |           | 5   | 1st |

| EAST ZONE       | LEICS A   | LEICS B   | NOTTS     | WARKS     | Pts | Pos |
|-----------------|-----------|-----------|-----------|-----------|-----|-----|
| LEICESTERSHIREA |           | 12 - 8    | 4.5 - 7.5 | 4.5 - 7.5 | 2   | 3   |
| LEICESTERSHIREB | 8 - 12    |           | 3.5 - 8.5 | 4.5 - 7.5 | 0   | 4   |
| NOTTINGHAMSHIRE | 7.5 - 4.5 | 8.5 - 3.5 |           | 5.5 - 6.5 | 4   | 2nd |
| WARWICKSHIRE    | 7.5 - 4.5 | 7.5 - 4.5 | 6.5 - 5.5 |           | 6   | 1st |

